



[Go to Product page](#)

Datasheet for ABIN6738791
anti-CHAD antibody (AA 202-251)

1 Image

Overview

Quantity:	100 µL
Target:	CHAD
Binding Specificity:	AA 202-251
Reactivity:	Human, Mouse, Rat, Dog, Horse, Cow, Hamster, Monkey
Host:	Rabbit
Clonality:	Polyclonal
Conjugate:	This CHAD antibody is un-conjugated
Application:	Western Blotting (WB)

Product Details

Immunogen:	Synthetic peptide located between aa202-251 of human CHAD (O15335, NP_001258). Percent identity by BLAST analysis: Human, Chimpanzee, Gorilla, Gibbon, Monkey, Galago, Marmoset, Mouse, Rat, Hamster, Elephant, Panda, Dog, Bovine, Horse (100%), Guinea pig (85%). Type of Immunogen: Synthetic peptide
Isotype:	IgG
Specificity:	Human CHAD
Predicted Reactivity:	Percent identity by BLAST analysis: Human, Mouse, Rat, Dog, Bovine, Horse (100%).
Purification:	Immunoaffinity purified

Target Details

Target:	CHAD
Alternative Name:	Chondroadherin / CHAD (CHAD Products)
Background:	Name/Gene ID: CHAD Synonyms: CHAD, Cartilage leucine-rich protein, Chondroadherin, SLRR4A, Chondroadherin proteoglycan
Gene ID:	1101
NCBI Accession:	NP_001258
UniProt:	O15335

Application Details

Application Notes:	Approved: WB Usage: ELISA titer using peptide based assay: 1:12500. Western Blot: Suggested dilution at 0.5 µg/mL in 5 % skim milk / PBS buffer, and HRP conjugated anti-Rabbit IgG should be diluted in 1:50000 - 100000 as second antibody.
Comment:	Target Species of Antibody: Human
Restrictions:	For Research Use only

Handling

Format:	Lyophilized
Reconstitution:	Distilled Water.
Concentration:	Lot specific
Buffer:	Lyophilized from PBS with 2 % sucrose
Handling Advice:	Avoid repeat freeze-thaw cycles.
Storage:	4 °C,-20 °C
Storage Comment:	Long term: -20°C, the use of 50% glycerol is recommended if storing aliquots in -20°C for long term use (up to 1 year) Short term (less than 1 week): 4°C. Avoid freeze-thaw cycles.

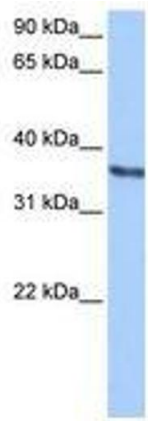


Image 1.