



[Go to Product page](#)

Datasheet for ABIN6738792
anti-TBCB antibody (C-Term)

1 Image

Overview

Quantity:	100 µL
Target:	TBCB
Binding Specificity:	C-Term
Reactivity:	Human, Mouse, Rat, Cow, Dog, Rabbit, Guinea Pig, Horse, Zebrafish (Danio rerio), Monkey, Bat, Pig
Host:	Rabbit
Clonality:	Polyclonal
Conjugate:	This TBCB antibody is un-conjugated
Application:	Western Blotting (WB)

Product Details

Immunogen:	Synthetic peptide from C-Terminus of human TBCB (Q99426, NP_001272). Percent identity by BLAST analysis: Human, Chimpanzee, Gorilla, Gibbon, Monkey, Galago, Marmoset, Mouse, Rat, Dog, Bovine, Bat, Rabbit, Horse, Pig, Guinea pig, Catfish, Salmon, Zebrafish (100%), Opossum (92%), Elephant (91%), Stickleback (85%), Xenopus (84%), Beetle (83%). Type of Immunogen: Synthetic peptide
Isotype:	IgG
Specificity:	Human TBCB / CKAP1
Predicted Reactivity:	Percent identity by BLAST analysis: Human, Mouse, Rat, Dog, Bovine, Horse, Pig, Zebrafish (100%) Xenopus (84%).

Product Details

Purification: Immunoaffinity purified

Target Details

Target: TBCB

Alternative Name: TBCB / CKAP1 ([TBCB Products](#))

Background: Name/Gene ID: TBCB

Synonyms: TBCB, CKAP1, CKAPI, Tubulin folding cofactor B, Tubulin-folding cofactor B, CG22, Tubulin-specific chaperone B

Gene ID: 1155

NCBI Accession: [NP_001272](#)

UniProt: [Q99426](#)

Application Details

Application Notes: Approved: WB

Usage: ELISA titer using peptide based assay: 1:62500. Western Blot: Suggested dilution at 1 μ g/mL in 5 % skim milk / PBS buffer, and HRP conjugated anti-Rabbit IgG should be diluted in 1:50000 - 100000 as second antibody.

Comment: Target Species of Antibody: Human

Restrictions: For Research Use only

Handling

Format: Lyophilized

Reconstitution: Distilled Water.

Concentration: Lot specific

Buffer: Lyophilized from PBS with 2 % sucrose

Handling Advice: Avoid repeat freeze-thaw cycles.

Storage: 4 °C, -20 °C

Storage Comment: Long term: -20°C, the use of 50% glycerol is recommended if storing aliquots in -20°C for long

Handling

term use (up to 1 year)

Short term (less than 1 week): 4°C. Avoid freeze-thaw cycles.

Images

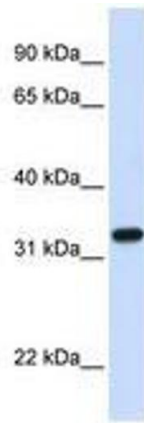


Image 1.