

Datasheet for ABIN6738799
anti-CENPB antibody (AA 506-555)[Go to Product page](#)

1 Image

Overview

Quantity:	100 µL
Target:	CENPB
Binding Specificity:	AA 506-555
Reactivity:	Human, Horse, Pig, Sheep, Dog
Host:	Rabbit
Clonality:	Polyclonal
Conjugate:	This CENPB antibody is un-conjugated
Application:	Western Blotting (WB)

Product Details

Immunogen:	Synthetic peptide located between aa506-555 of human CENPB (P07199, NP_001801). Percent identity by BLAST analysis: Human, Gibbon, Monkey (100%), Marmoset, Mouse, Rat, Hamster, Panda (92%), Galago, Sheep, Dog, Horse, Pig (85%), Bovine (83%). Type of Immunogen: Synthetic peptide
Isotype:	IgG
Specificity:	Human CENPB
Predicted Reactivity:	Percent identity by BLAST analysis: Human (100%) Mouse, Rat (92%) Sheep, Dog, Horse, Pig (85%).
Purification:	Immunoaffinity purified

Target Details

Target:	CENPB
Alternative Name:	CENPB (CENPB Products)
Background:	Name/Gene ID: CENPB Synonyms: CENPB, Centromere autoantigen B, Centromere protein B (80kD), Centromere protein B, Major centromere autoantigen B, CENP-B, Centromere protein B, 80 kDa
Gene ID:	1059
NCBI Accession:	NP_001801
UniProt:	P07199

Application Details

Application Notes:	Approved: WB Usage: ELISA titer using peptide based assay: 1:62500. Western Blot: Suggested dilution at 1 µg/mL in 5 % skim milk / PBS buffer, and HRP conjugated anti-Rabbit IgG should be diluted in 1:50000 - 100000 as second antibody.
Comment:	Target Species of Antibody: Human
Restrictions:	For Research Use only

Handling

Format:	Lyophilized
Reconstitution:	Distilled Water.
Concentration:	Lot specific
Buffer:	Lyophilized from PBS with 2 % sucrose
Handling Advice:	Avoid repeat freeze-thaw cycles.
Storage:	4 °C,-20 °C
Storage Comment:	Long term: -20°C, the use of 50% glycerol is recommended if storing aliquots in -20°C for long term use (up to 1 year) Short term (less than 1 week): 4°C. Avoid freeze-thaw cycles.

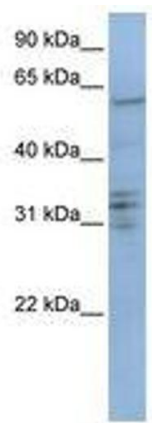


Image 1.