



[Go to Product page](#)

Datasheet for ABIN6738814
anti-GAS2L1 antibody (AA 434-483)

1 Image

Overview

Quantity:	100 µL
Target:	GAS2L1
Binding Specificity:	AA 434-483
Reactivity:	Human, Mouse, Rat, Cow
Host:	Rabbit
Clonality:	Polyclonal
Conjugate:	This GAS2L1 antibody is un-conjugated
Application:	Western Blotting (WB)

Product Details

Immunogen:	Synthetic peptide located between aa434-483 of human GAS2L1 (Q99501, NP_006469). Percent identity by BLAST analysis: Human, Gorilla, Marmoset, Mouse, Rat (100%), Monkey, Galago (92%), Dog (91%), Panda, Bovine (85%), Bat (83%). Type of Immunogen: Synthetic peptide
Isotype:	IgG
Specificity:	Human GAS2L1
Predicted Reactivity:	Percent identity by BLAST analysis: Human, Rat (100%) Dog (91%) Bovine (85%).
Purification:	Immunoaffinity purified

Target Details

Target:	GAS2L1
Alternative Name:	GAS2L1 (GAS2L1 Products)
Background:	Name/Gene ID: GAS2L1 Synonyms: GAS2L1, GAS2-like protein 1, GAR22
Gene ID:	10634
NCBI Accession:	NP_006469
UniProt:	Q99501

Application Details

Application Notes:	Approved: WB Usage: ELISA titer using peptide based assay: 1:62500. Western Blot: Suggested dilution at 1 μ g/mL in 5 % skim milk / PBS buffer, and HRP conjugated anti-Rabbit IgG should be diluted in 1:50000 - 100000 as second antibody.
Comment:	Target Species of Antibody: Human
Restrictions:	For Research Use only

Handling

Format:	Lyophilized
Reconstitution:	Distilled Water.
Concentration:	Lot specific
Buffer:	Lyophilized from PBS with 2 % sucrose
Handling Advice:	Avoid repeat freeze-thaw cycles.
Storage:	4 °C,-20 °C
Storage Comment:	Long term: -20°C, the use of 50% glycerol is recommended if storing aliquots in -20°C for long term use (up to 1 year) Short term (less than 1 week): 4°C. Avoid freeze-thaw cycles.

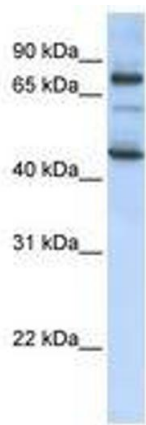


Image 1.