

Datasheet for ABIN6738817
anti-WASF3 antibody (AA 96-145)[Go to Product page](#)

1 Image

Overview

Quantity:	100 µL
Target:	WASF3
Binding Specificity:	AA 96-145
Reactivity:	Human, Mouse, Monkey, Dog, Guinea Pig, Horse, Cow, Rabbit, Zebrafish (Danio rerio), Bat, Chicken, Pig
Host:	Rabbit
Clonality:	Polyclonal
Conjugate:	This WASF3 antibody is un-conjugated
Application:	Western Blotting (WB)

Product Details

Immunogen:	Synthetic peptide located between aa96-145 of human WASF3 (Q9UPY6, NP_006637). Percent identity by BLAST analysis: Human, Chimpanzee, Gorilla, Gibbon, Monkey, Galago, Marmoset, Mouse, Elephant, Panda, Dog, Bovine, Bat, Rabbit, Horse, Opossum, Guinea pig, Turkey, Zebra finch, Chicken, Platypus (100%), Sea squirt (90%), Pig (85%). Type of Immunogen: Synthetic peptide
Isotype:	IgG
Specificity:	Human WASF3
Predicted Reactivity:	Percent identity by BLAST analysis: Human, Mouse, Dog, Bovine, Rabbit, Horse, Chicken (100%) Pig (85%).

Product Details

Purification: Immunoaffinity purified

Target Details

Target: WASF3

Alternative Name: WASF3 ([WASF3 Products](#))

Background: Name/Gene ID: WASF3

Synonyms: WASF3, Brush-1, KIAA0900, Protein WAVE-3, WAS protein family, member 3, WAVE3, SCAR3, WASP family protein member 3

Gene ID: 10810

NCBI Accession: [NP_006637](#)

UniProt: [Q9UPY6](#)

Pathways: [RTK Signaling](#)

Application Details

Application Notes: Approved: WB

Usage: ELISA titer using peptide based assay: 1:312500. Western Blot: Suggested dilution at 1 µg/mL in 5 % skim milk / PBS buffer, and HRP conjugated anti-Rabbit IgG should be diluted in 1:50000 - 100000 as second antibody.

Comment: Target Species of Antibody: Human

Restrictions: For Research Use only

Handling

Format: Lyophilized

Reconstitution: Distilled Water.

Concentration: Lot specific

Buffer: Lyophilized from PBS with 2 % sucrose

Handling Advice: Avoid repeat freeze-thaw cycles.

Storage: 4 °C, -20 °C

Handling

Storage Comment:	Long term: -20°C, the use of 50% glycerol is recommended if storing aliquots in -20°C for long term use (up to 1 year)
	Short term (less than 1 week): 4°C. Avoid freeze-thaw cycles.

Images

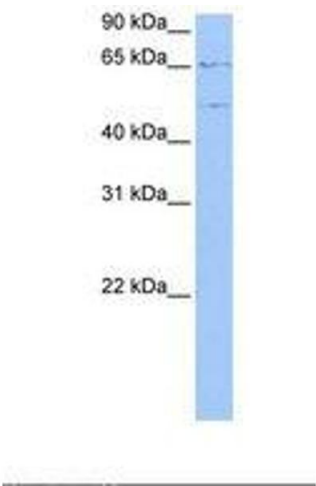


Image 1.