

Datasheet for ABIN6738818
anti-WASF3 antibody (AA 184-233)[Go to Product page](#)

1 Image

Overview

Quantity:	100 µL
Target:	WASF3
Binding Specificity:	AA 184-233
Reactivity:	Human, Mouse, Monkey, Dog, Guinea Pig, Horse, Rabbit, Bat, Chicken, Xenopus laevis
Host:	Rabbit
Clonality:	Polyclonal
Conjugate:	This WASF3 antibody is un-conjugated
Application:	Western Blotting (WB)

Product Details

Immunogen:	Synthetic peptide located between aa184-233 of human WASF3 (Q9UPY6, NP_006637). Percent identity by BLAST analysis: Human, Chimpanzee, Gorilla, Gibbon, Monkey, Galago, Marmoset, Mouse, Elephant, Panda, Dog, Bat, Rabbit, Horse, Opossum, Guinea pig, Turkey, Zebra finch, Chicken, Platypus, Xenopus (100%), Bovine, Pig (92%). Type of Immunogen: Synthetic peptide
Isotype:	IgG
Specificity:	Human WASF3
Predicted Reactivity:	Percent identity by BLAST analysis: Human, Mouse, Dog, Rabbit, Horse, Chicken (100%) Bovine, Pig (92%).
Purification:	Immunoaffinity purified

Target Details

Target:	WASF3
Alternative Name:	WASF3 (WASF3 Products)
Background:	Name/Gene ID: WASF3 Synonyms: WASF3, Brush-1, KIAA0900, Protein WAVE-3, WAS protein family, member 3, WAVE3, SCAR3, WASP family protein member 3
Gene ID:	10810
NCBI Accession:	NP_006637
UniProt:	Q9UPY6
Pathways:	RTK Signaling

Application Details

Application Notes:	Approved: WB Usage: ELISA titer using peptide based assay: 1:312500. Western Blot: Suggested dilution at 1 µg/mL in 5 % skim milk / PBS buffer, and HRP conjugated anti-Rabbit IgG should be diluted in 1:50000 - 100000 as second antibody.
Comment:	Target Species of Antibody: Human
Restrictions:	For Research Use only

Handling

Format:	Lyophilized
Reconstitution:	Distilled Water.
Concentration:	Lot specific
Buffer:	Lyophilized from PBS with 2 % sucrose
Handling Advice:	Avoid repeat freeze-thaw cycles.
Storage:	4 °C, -20 °C
Storage Comment:	Long term: -20°C, the use of 50% glycerol is recommended if storing aliquots in -20°C for long term use (up to 1 year) Short term (less than 1 week): 4°C. Avoid freeze-thaw cycles.

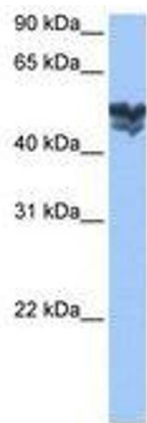


Image 1.