

## Datasheet for ABIN6738822 **anti-SPON2 antibody (AA 190-239)**



[Go to Product page](#)

### 1 Image

#### Overview

Quantity:	100 µL
Target:	SPON2
Binding Specificity:	AA 190-239
Reactivity:	Human, Mouse, Rat, Monkey, Cow, Guinea Pig, Horse, Dog, Bat, Chicken, Xenopus laevis
Host:	Rabbit
Clonality:	Polyclonal
Conjugate:	This SPON2 antibody is un-conjugated
Application:	Western Blotting (WB)

#### Product Details

Immunogen:	<p>Synthetic peptide located between aa190-239 of human SPON2 (Q9BUD6, NP_036577).</p> <p>Percent identity by BLAST analysis: Human, Chimpanzee, Gorilla, Gibbon, Monkey, Galago, Mouse, Rat, Dog, Bovine, Bat, Horse, Opossum, Guinea pig, Turkey, Zebra finch, Chicken, Platypus, Xenopus, Salmon (100%), Elephant, Zebrafish (93%), Orangutan (92%), Drosophila (81%), Stickleback (80%).</p> <p>Type of Immunogen: Synthetic peptide</p>
Isotype:	IgG
Specificity:	Human SPON2
Predicted Reactivity:	Percent identity by BLAST analysis: Human, Mouse, Rat, Dog, Bovine, Horse, Guinea pig, Chicken, Xenopus (100%) Zebrafish (93%).

## Product Details

Purification: Immunoaffinity purified

## Target Details

Target: SPON2

Alternative Name: SPON2 / MINDIN ([SPON2 Products](#))

Background: Name/Gene ID: SPON2

Synonyms: SPON2, DIL-1, DIL1, M-SPONDIN, Spondin-2, MINDIN

Gene ID: 10417

NCBI Accession: [NP\\_036577](#)

UniProt: [Q9BUD6](#)

## Application Details

Application Notes: Approved: WB

Usage: ELISA titer using peptide based assay: 1:1562500. Western Blot: Suggested dilution at 0.5 µg/mL in 5 % skim milk / PBS buffer, and HRP conjugated anti-Rabbit IgG should be diluted in 1:50000 - 100000 as second antibody.

Comment: Target Species of Antibody: Human

Restrictions: For Research Use only

## Handling

Format: Lyophilized

Reconstitution: Distilled Water.

Concentration: Lot specific

Buffer: Lyophilized from PBS with 2 % sucrose

Handling Advice: Avoid repeat freeze-thaw cycles.

Storage: 4 °C, -20 °C

Storage Comment: Long term: -20°C, the use of 50% glycerol is recommended if storing aliquots in -20°C for long term use (up to 1 year)

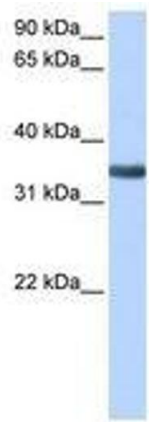
Handling

---

Short term (less than 1 week): 4°C. Avoid freeze-thaw cycles.

Images

---



**Image 1.**