



[Go to Product page](#)

Datasheet for ABIN6738834
anti-C8orf34 antibody (AA 112-161)

1 Image

Overview

| | |
|----------------------|---|
| Quantity: | 100 µL |
| Target: | C8orf34 |
| Binding Specificity: | AA 112-161 |
| Reactivity: | Human, Mouse, Rat, Cow, Dog, Pig, Rabbit, Chicken, Monkey |
| Host: | Rabbit |
| Clonality: | Polyclonal |
| Conjugate: | This C8orf34 antibody is un-conjugated |
| Application: | Western Blotting (WB) |

Product Details

| | |
|-----------------------|---|
| Immunogen: | Synthetic peptide located between aa112-161 of human C8orf34 (Q49A92, NP_443190). Percent identity by BLAST analysis: Human, Chimpanzee, Gorilla, Gibbon, Monkey, Marmoset, Mouse, Rat, Elephant, Dog, Bovine, Rabbit, Pig, Opossum, Turkey, Zebra finch, Chicken, Platypus (100%), Guinea pig, Stickleback (92%), Lizard, Zebrafish (85%), Xenopus (84%). Type of Immunogen: Synthetic peptide |
| Isotype: | IgG |
| Specificity: | Human C8orf34 |
| Predicted Reactivity: | Percent identity by BLAST analysis: Human, Dog, Rabbit, Pig, Chicken (100%) Guinea pig (92%). |
| Purification: | Immunoaffinity purified |

Target Details

Target: C8orf34

Alternative Name: C8orf34 ([C8orf34 Products](#))

Background: Name/Gene ID: C8orf34

Synonyms: C8orf34, Protein VEST-1, Vestibule 1, VEST-1, VEST1, Vestibule-1 protein

Gene ID: 116328

NCBI Accession: [NP_443190](#)

UniProt: [Q49A92](#)

Application Details

Application Notes: Approved: WB

Usage: ELISA titer using peptide based assay: 1:62500. Western Blot: Suggested dilution at 1 μ g/mL in 5 % skim milk / PBS buffer, and HRP conjugated anti-Rabbit IgG should be diluted in 1:50000 - 100000 as second antibody.

Comment: Target Species of Antibody: Human

Restrictions: For Research Use only

Handling

Format: Lyophilized

Reconstitution: Distilled Water.

Concentration: Lot specific

Buffer: Lyophilized from PBS with 2 % sucrose

Handling Advice: Avoid repeat freeze-thaw cycles.

Storage: 4 °C, -20 °C

Storage Comment: Long term: -20°C, the use of 50% glycerol is recommended if storing aliquots in -20°C for long term use (up to 1 year)

Short term (less than 1 week): 4°C. Avoid freeze-thaw cycles.

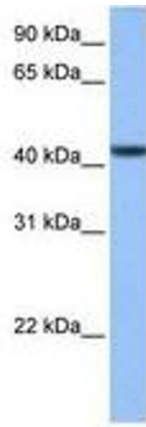


Image 1.