



[Go to Product page](#)

Datasheet for ABIN6738838  
**anti-DUSP19 antibody (C-Term)**

1 Image

Overview

Quantity:	100 µL
Target:	DUSP19
Binding Specificity:	C-Term
Reactivity:	Human, Rat, Monkey, Dog, Bat
Host:	Rabbit
Clonality:	Polyclonal
Conjugate:	This DUSP19 antibody is un-conjugated
Application:	Western Blotting (WB)

Product Details

Immunogen:	Synthetic peptide from C-Terminus of human DUSP19 (Q8WTR2, NP_543152). Percent identity by BLAST analysis: Human, Chimpanzee, Gorilla, Gibbon, Monkey, Galago, Bat (100%), Mouse, Hamster, Bovine, Horse, Guinea pig (92%), Marmoset, Dog (85%), Rat (84%).  Type of Immunogen: Synthetic peptide
Isotype:	IgG
Specificity:	Human DUSP19
Predicted Reactivity:	Percent identity by BLAST analysis: Mouse, Bovine, Horse, Guinea pig (92%) Dog (85%) Rat (84%).
Purification:	Immunoaffinity purified

## Target Details

---

Target:	DUSP19
Alternative Name:	DUSP19 / SKRP1 ( <a href="#">DUSP19 Products</a> )
Background:	Name/Gene ID: DUSP19 Subfamily: LMW-DSP  Synonyms: DUSP19, DUSP17, LMW-DSP3, LMWDSP3, Protein phosphatase SKRP1, TS-DSP1, LDP-2, SKRP1
Gene ID:	142679
NCBI Accession:	<a href="#">NP_543152</a>
UniProt:	<a href="#">Q8WTR2</a>

## Application Details

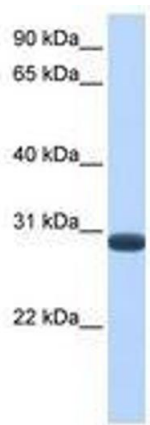
---

Application Notes:	Approved: WB  Usage: ELISA titer using peptide based assay: 1:62500. Western Blot: Suggested dilution at 1 $\mu$ g/mL in 5 % skim milk / PBS buffer, and HRP conjugated anti-Rabbit IgG should be diluted in 1:50000 - 100000 as second antibody.
Comment:	Target Species of Antibody: Human
Restrictions:	For Research Use only

## Handling

---

Format:	Lyophilized
Reconstitution:	Distilled Water.
Concentration:	Lot specific
Buffer:	Lyophilized from PBS with 2 % sucrose
Handling Advice:	Avoid repeat freeze-thaw cycles.
Storage:	4 °C, -20 °C
Storage Comment:	Long term: -20°C, the use of 50% glycerol is recommended if storing aliquots in -20°C for long term use (up to 1 year) Short term (less than 1 week): 4°C. Avoid freeze-thaw cycles.



**Image 1.**