



[Go to Product page](#)

Datasheet for ABIN6738841
anti-ASB6 antibody (AA 74-123)

1 Image

Overview

Quantity:	100 µL
Target:	ASB6
Binding Specificity:	AA 74-123
Reactivity:	Human, Mouse, Rat, Zebrafish (Danio rerio), Hamster, Monkey
Host:	Rabbit
Clonality:	Polyclonal
Conjugate:	This ASB6 antibody is un-conjugated
Application:	Western Blotting (WB)

Product Details

Immunogen:	Synthetic peptide located between aa74-123 of human ASB6 (Q9NWX5, NP_060343). Percent identity by BLAST analysis: Human, Chimpanzee, Gorilla, Orangutan, Gibbon, Monkey, Marmoset, Mouse, Rat, Hamster, Opossum (100%), Galago, Elephant, Panda, Dog, Bovine, Bat, Horse, Pig, Guinea pig (92%), Platypus (85%), Turkey, Zebra finch, Chicken, Xenopus (83%). Type of Immunogen: Synthetic peptide
Isotype:	IgG
Specificity:	Human ASB6
Predicted Reactivity:	Percent identity by BLAST analysis: Human, Mouse, Rat (100%) Dog, Bovine, Horse, Pig (92%) Chicken, Xenopus (83%).
Purification:	Immunoaffinity purified

Target Details

Target:	ASB6
Alternative Name:	ASB6 (ASB6 Products)
Background:	Name/Gene ID: ASB6 Synonyms: ASB6, ASB-6
Gene ID:	140459
NCBI Accession:	NP_060343
UniProt:	Q9NWX5

Application Details

Application Notes:	Approved: WB Usage: ELISA titer using peptide based assay: 1:1562500. Western Blot: Suggested dilution at 1 µg/mL in 5 % skim milk / PBS buffer, and HRP conjugated anti-Rabbit IgG should be diluted in 1:50000 - 100000 as second antibody.
Comment:	Target Species of Antibody: Human
Restrictions:	For Research Use only

Handling

Format:	Lyophilized
Reconstitution:	Distilled Water.
Concentration:	Lot specific
Buffer:	Lyophilized from PBS with 2 % sucrose
Handling Advice:	Avoid repeat freeze-thaw cycles.
Storage:	4 °C, -20 °C
Storage Comment:	Long term: -20°C, the use of 50% glycerol is recommended if storing aliquots in -20°C for long term use (up to 1 year) Short term (less than 1 week): 4°C. Avoid freeze-thaw cycles.

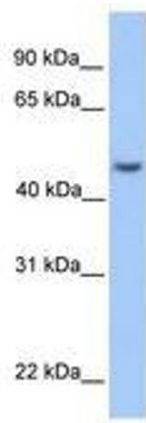


Image 1.