



[Go to Product page](#)

Datasheet for ABIN6738843
anti-EIF5 antibody (N-Term)

1 Image

Overview

Quantity:	100 µL
Target:	EIF5
Binding Specificity:	N-Term
Reactivity:	Human, Mouse, Rat, Cow, Horse, Dog, Guinea Pig, Rabbit, Monkey, Zebrafish (Danio rerio), Pig, Chicken, Xenopus laevis
Host:	Rabbit
Clonality:	Polyclonal
Conjugate:	This EIF5 antibody is un-conjugated
Application:	Western Blotting (WB)

Product Details

Immunogen:	Synthetic peptide from N-Terminus of human EIF5 (P55010, NP_892116). Percent identity by BLAST analysis: Human, Chimpanzee, Orangutan, Gibbon, Galago, Marmoset, Mouse, Rat, Elephant, Panda, Dog, Bovine, Rabbit, Horse, Pig, Opossum, Guinea pig, Turkey, Zebra finch, Chicken, Platypus, Xenopus, Stickleback, Zebrafish (100%), Trout, Salmon, Beetle (92%), Gorilla, Drosophila (85%). Type of Immunogen: Synthetic peptide
Isotype:	IgG
Specificity:	Human EIF5
Predicted Reactivity:	Percent identity by BLAST analysis: Human, Mouse, Rat, Dog, Bovine, Horse, Chicken, Xenopus,

Product Details

Zebrafish (100%).

Purification: Immunoaffinity purified

Target Details

Target: EIF5

Alternative Name: EIF5 / EIF-5A ([EIF5 Products](#))

Background: Name/Gene ID: EIF5

Synonyms: EIF5, EIF-5A, EIF-5

Gene ID: 1983

NCBI Accession: [NP_892116](#)

UniProt: [P55010](#)

Application Details

Application Notes: Approved: WB

Usage: ELISA titer using peptide based assay: 1:312500. Western Blot: Suggested dilution at 1 μ g/mL in 5 % skim milk / PBS buffer, and HRP conjugated anti-Rabbit IgG should be diluted in 1:50000 - 100000 as second antibody.

Comment: Target Species of Antibody: Human

Restrictions: For Research Use only

Handling

Format: Lyophilized

Reconstitution: Distilled Water.

Concentration: Lot specific

Buffer: Lyophilized from PBS with 2 % sucrose

Handling Advice: Avoid repeat freeze-thaw cycles.

Storage: 4 °C, -20 °C

Storage Comment: Long term: -20°C, the use of 50% glycerol is recommended if storing aliquots in -20°C for long

Handling

term use (up to 1 year)

Short term (less than 1 week): 4°C. Avoid freeze-thaw cycles.

Images

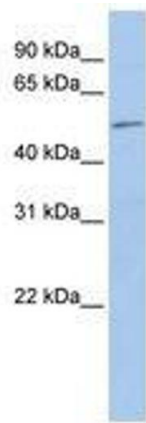


Image 1.