

Datasheet for ABIN6738851 anti-PDE1A antibody (AA 51-100)



[Go to Product page](#)

1 Image

Overview

Quantity:	100 µL
Target:	PDE1A
Binding Specificity:	AA 51-100
Reactivity:	Human, Mouse, Rat, Cow, Dog, Guinea Pig, Horse, Monkey, Pig, Bat, Rabbit, Chicken, Xenopus laevis
Host:	Rabbit
Clonality:	Polyclonal
Conjugate:	This PDE1A antibody is un-conjugated
Application:	Western Blotting (WB)

Product Details

Immunogen:	Synthetic peptide located between aa51-100 of human PDE1C (P54750, NP_005011). Percent identity by BLAST analysis: Human, Chimpanzee, Gorilla, Orangutan, Gibbon, Monkey, Galago, Marmoset, Mouse, Rat, Elephant, Panda, Dog, Bovine, Bat, Rabbit, Horse, Pig, Opossum, Guinea pig, Turkey, Zebra finch, Chicken, Platypus, Lizard, Xenopus (100%), Stickleback (85%). Type of Immunogen: Synthetic peptide
Isotype:	IgG
Specificity:	Human PDE1A
Predicted Reactivity:	Percent identity by BLAST analysis: Human, Mouse, Rat, Dog, Bovine, Rabbit, Horse, Guinea pig, Chicken (100%).

Product Details

Purification: Immunoaffinity purified

Target Details

Target: PDE1A

Alternative Name: PDE1A ([PDE1A Products](#))

Background: Name/Gene ID: PDE1A
Subfamily: PDE - cAMP/cGMP dual-specific, Ca/Calmodulin-dependent
Family: Phosphodiesterase

Synonyms: PDE1A, 61 kDa Cam-PDE, 59 kDa CaM-PDE, Cam-PDE 1A, HCAM-1, HCAM1, HSPDE1A, Phosphodiesterase 1a, CAM-PDE-1A

Gene ID: 5136

NCBI Accession: [NP_005011](#)

UniProt: [P54750](#)

Pathways: [Neurotrophin Signaling Pathway](#), [cAMP Metabolic Process](#), [G-protein mediated Events](#), [Interaction of EGFR with phospholipase C-gamma](#)

Application Details

Application Notes: Approved: WB

Usage: ELISA titer using peptide based assay: 1:1562500. Western Blot: Suggested dilution at 1 µg/mL in 5 % skim milk / PBS buffer, and HRP conjugated anti-Rabbit IgG should be diluted in 1:50000 - 100000 as second antibody.

Comment: Target Species of Antibody: Human

Restrictions: For Research Use only

Handling

Format: Lyophilized

Reconstitution: Distilled Water.

Concentration: Lot specific

Buffer: Lyophilized from PBS with 2 % sucrose

Handling

Handling Advice:	Avoid repeat freeze-thaw cycles.
Storage:	4 °C,-20 °C
Storage Comment:	Long term: -20°C, the use of 50% glycerol is recommended if storing aliquots in -20°C for long term use (up to 1 year) Short term (less than 1 week): 4°C. Avoid freeze-thaw cycles.

Images

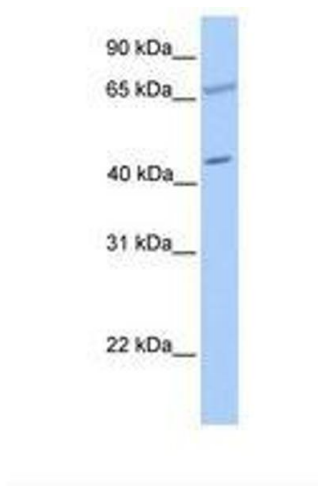


Image 1.