

Datasheet for ABIN6738856

anti-Choline Kinase alpha antibody (AA 179-228)



[Go to Product page](#)

1 Image

Overview

Quantity:	100 µL
Target:	Choline Kinase alpha (CHKA)
Binding Specificity:	AA 179-228
Reactivity:	Human, Mouse, Rat, Cow, Dog, Rabbit, Monkey
Host:	Rabbit
Clonality:	Polyclonal
Conjugate:	This Choline Kinase alpha antibody is un-conjugated
Application:	Western Blotting (WB)

Product Details

Immunogen:	Synthetic peptide located between aa179-228 of human CHKA (P35790, NP_001268). Percent identity by BLAST analysis: Human, Chimpanzee, Gibbon, Monkey, Marmoset, Mouse, Rat, Elephant, Dog, Bovine, Rabbit (100%), Galago, Bat, Horse, Pig, Guinea pig (92%), Lizard (85%). Type of Immunogen: Synthetic peptide
Isotype:	IgG
Specificity:	Human CHKA / Choline Kinase
Predicted Reactivity:	Percent identity by BLAST analysis: Human, Mouse, Rat, Dog, Bovine, Rabbit (100%) Horse, Pig, Guinea pig (92%).
Purification:	Immunoaffinity purified

Target Details

Target:	Choline Kinase alpha (CHKA)
Alternative Name:	CHKA / CK / Choline Kinase (CHKA Products)
Background:	Name/Gene ID: CHKA Synonyms: CHKA, Choline kinase alpha, CK, CKI, CHETK-alpha, Ethanolamine kinase, CHK, Choline kinase, EK
Gene ID:	1119
NCBI Accession:	NP_001268
UniProt:	P35790

Application Details

Application Notes:	Approved: WB Usage: ELISA titer using peptide based assay: 1:312500. Western Blot: Suggested dilution at 1 μ g/mL in 5 % skim milk / PBS buffer, and HRP conjugated anti-Rabbit IgG should be diluted in 1:50000 - 100000 as second antibody.
Comment:	Target Species of Antibody: Human
Restrictions:	For Research Use only

Handling

Format:	Lyophilized
Reconstitution:	Distilled Water.
Concentration:	Lot specific
Buffer:	Lyophilized from PBS with 2 % sucrose
Handling Advice:	Avoid repeat freeze-thaw cycles.
Storage:	4 °C,-20 °C
Storage Comment:	Long term: -20°C, the use of 50% glycerol is recommended if storing aliquots in -20°C for long term use (up to 1 year) Short term (less than 1 week): 4°C. Avoid freeze-thaw cycles.

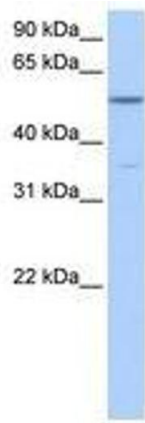


Image 1.