

Datasheet for ABIN6738857
anti-CPD antibody (AA 181-230)[Go to Product page](#)

1 Image

Overview

Quantity:	100 µL
Target:	CPD
Binding Specificity:	AA 181-230
Reactivity:	Human, Rat, Dog, Pig
Host:	Rabbit
Clonality:	Polyclonal
Conjugate:	This CPD antibody is un-conjugated
Application:	Western Blotting (WB)

Product Details

Immunogen:	Synthetic peptide located between aa181-230 of human CPD (O75976, NP_001295). Percent identity by BLAST analysis: Human, Chimpanzee (100%), Gibbon, Marmoset, Rabbit, Horse (92%), Galago, Dog, Pig (85%), Mouse, Rat (78%). Type of Immunogen: Synthetic peptide
Isotype:	IgG
Specificity:	Human CPD
Predicted Reactivity:	Percent identity by BLAST analysis: Rabbit, Horse (92%) Dog, Pig (85%).
Purification:	Immunoaffinity purified

Target Details

Target:	CPD
Alternative Name:	CPD (CPD Products)
Background:	Name/Gene ID: CPD Subfamily: Metallopeptidase M14 Family: Exopeptidase Synonyms: CPD, Carboxypeptidase D, gp180, Metalloprotease D
Gene ID:	1362
NCBI Accession:	NP_001295
UniProt:	O75976
Pathways:	Synaptic Membrane , Regulation of G-Protein Coupled Receptor Protein Signaling

Application Details

Application Notes:	Approved: WB Usage: ELISA titer using peptide based assay: 1:12500. Western Blot: Suggested dilution at 1 µg/mL in 5 % skim milk / PBS buffer, and HRP conjugated anti-Rabbit IgG should be diluted in 1:50000 - 100000 as second antibody.
Comment:	Target Species of Antibody: Human
Restrictions:	For Research Use only

Handling

Format:	Lyophilized
Reconstitution:	Distilled Water.
Concentration:	Lot specific
Buffer:	Lyophilized from PBS with 2 % sucrose
Handling Advice:	Avoid repeat freeze-thaw cycles.
Storage:	4 °C,-20 °C
Storage Comment:	Long term: -20°C, the use of 50% glycerol is recommended if storing aliquots in -20°C for long term use (up to 1 year)

Handling

Short term (less than 1 week): 4°C. Avoid freeze-thaw cycles.

Images

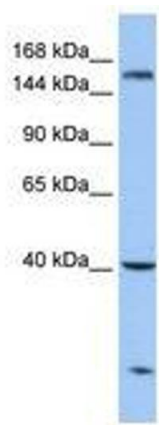


Image 1.