



[Go to Product page](#)

Datasheet for ABIN6738863

anti-Lactate Dehydrogenase C antibody (AA 91-140)

1 Image

Overview

Quantity:	100 µL
Target:	Lactate Dehydrogenase C (LDHC)
Binding Specificity:	AA 91-140
Reactivity:	Human, Mouse, Rat, Dog, Horse, Rabbit, Bat, Monkey, Xenopus laevis
Host:	Rabbit
Clonality:	Polyclonal
Conjugate:	This Lactate Dehydrogenase C antibody is un-conjugated
Application:	Western Blotting (WB)

Product Details

Immunogen:	Synthetic peptide located between aa91-140 of human LDHC (P07864, NP_002292). Percent identity by BLAST analysis: Human, Chimpanzee, Gorilla, Gibbon, Monkey, Galago, Marmoset, Mouse, Rat, Panda, Dog, Bat, Rabbit, Horse, Xenopus (100%), Orangutan, Ferret, Hamster, Dolphin, Bovine, Pig, Opossum, Guinea pig, Platypus, Zebrafish (92%), Elephant, Lizard, Catfish (85%). Type of Immunogen: Synthetic peptide
Isotype:	IgG
Specificity:	Human LDHC
Predicted Reactivity:	Percent identity by BLAST analysis: Human, Mouse, Rat, Dog, Rabbit (100%) Bovine, Pig (92%) Xenopus (85%).

Product Details

Purification: Immunoaffinity purified

Target Details

Target: Lactate Dehydrogenase C (LDHC)

Alternative Name: LDHC ([LDHC Products](#))

Background: Name/Gene ID: LDHC

Synonyms: LDHC, Cancer/testis antigen 32, CT32, LDH-X, LDHX, Lactate dehydrogenase C, LDH-C, LDH3, Lactate dehydrogenase C4, LDH testis subunit

Gene ID: 3948

NCBI Accession: [NP_002292](#)

UniProt: [P07864](#)

Pathways: [Ribonucleoside Biosynthetic Process](#), [Warburg Effect](#)

Application Details

Application Notes: Approved: WB

Usage: ELISA titer using peptide based assay: 1:312500. Western Blot: Suggested dilution at 1 µg/mL in 5 % skim milk / PBS buffer, and HRP conjugated anti-Rabbit IgG should be diluted in 1:50000 - 100000 as second antibody.

Comment: Target Species of Antibody: Human

Restrictions: For Research Use only

Handling

Format: Lyophilized

Reconstitution: Distilled Water.

Concentration: Lot specific

Buffer: Lyophilized from PBS with 2 % sucrose

Handling Advice: Avoid repeat freeze-thaw cycles.

Storage: 4 °C,-20 °C

Handling

Storage Comment: Long term: -20°C, the use of 50% glycerol is recommended if storing aliquots in -20°C for long term use (up to 1 year)
Short term (less than 1 week): 4°C. Avoid freeze-thaw cycles.

Images

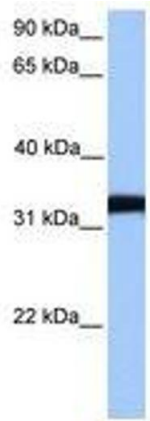


Image 1.