

Datasheet for ABIN6738867  
**anti-PDXK antibody (AA 160-209)**[Go to Product page](#)

## 1 Image

## Overview

Quantity:	100 µL
Target:	PDXK
Binding Specificity:	AA 160-209
Reactivity:	Human, Mouse, Rat, Cow, Rabbit, Dog, Guinea Pig, Horse, Pig
Host:	Rabbit
Clonality:	Polyclonal
Conjugate:	This PDXK antibody is un-conjugated
Application:	Western Blotting (WB)

## Product Details

Immunogen:	Synthetic peptide located between aa160-209 of human PDXK (O00764, NP_003672). Percent identity by BLAST analysis: Human (100%), Monkey, Elephant (92%), Gorilla, Gibbon, Mouse, Rat, Hamster, Rabbit, Guinea pig (85%).  Type of Immunogen: Synthetic peptide
Isotype:	IgG
Specificity:	Human PDXK
Predicted Reactivity:	Percent identity by BLAST analysis: Human (100%) Mouse, Rat, Rabbit, Guinea pig (85%).
Purification:	Immunoaffinity purified

## Target Details

Target:	PDXK
Alternative Name:	PDXK / PNK ( <a href="#">PDXK Products</a> )
Background:	Name/Gene ID: PDXK Subfamily: Pyridoxine Family: Non-protein Kinase  Synonyms: PDXK, C21orf124, C21orf97, PNK, PRED79, Pyridoxal kinase, Pyridoxine kinase, Vitamin B6 kinase, PKH, Pyridoxamine kinase
Gene ID:	8566
NCBI Accession:	<a href="#">NP_003672</a>
UniProt:	<a href="#">O00764</a>

## Application Details

Application Notes:	Approved: WB  Usage: ELISA titer using peptide based assay: 1:312500. Western Blot: Suggested dilution at 1 µg/mL in 5 % skim milk / PBS buffer, and HRP conjugated anti-Rabbit IgG should be diluted in 1:50000 - 100000 as second antibody.
Comment:	Target Species of Antibody: Human
Restrictions:	For Research Use only

## Handling

Format:	Lyophilized
Reconstitution:	Distilled Water.
Concentration:	Lot specific
Buffer:	Lyophilized from PBS with 2 % sucrose
Handling Advice:	Avoid repeat freeze-thaw cycles.
Storage:	4 °C, -20 °C
Storage Comment:	Long term: -20°C, the use of 50% glycerol is recommended if storing aliquots in -20°C for long term use (up to 1 year)

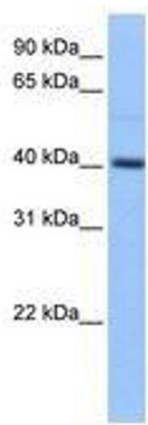
## Handling

---

Short term (less than 1 week): 4°C. Avoid freeze-thaw cycles.

## Images

---



**Image 1.**