



[Go to Product page](#)

Datasheet for ABIN6738871

anti-CDKN3 antibody (AA 51-100)

1 Image

Overview

Quantity:	100 µL
Target:	CDKN3
Binding Specificity:	AA 51-100
Reactivity:	Human, Mouse, Rat, Dog, Guinea Pig, Cow, Monkey, Pig
Host:	Rabbit
Clonality:	Polyclonal
Conjugate:	This CDKN3 antibody is un-conjugated
Application:	Western Blotting (WB)

Product Details

Immunogen:	Synthetic peptide located between aa51-100 of human CDKN3 (Q16667, NP_005183). Percent identity by BLAST analysis: Human, Gorilla, Gibbon, Monkey (100%), Bat, Rabbit, Horse (92%), Marmoset, Mouse, Rat, Elephant, Dog, Bovine, Pig, Opossum, Guinea pig (85%). Type of Immunogen: Synthetic peptide
Isotype:	IgG
Specificity:	Human CDKN3
Predicted Reactivity:	Percent identity by BLAST analysis: Human (100%) Horse (92%) Mouse, Rat, Dog, Bovine, Pig, Guinea pig (85%).
Purification:	Immunoaffinity purified

Target Details

Target:	CDKN3
Alternative Name:	CDKN3 / KAP (CDKN3 Products)
Background:	Name/Gene ID: CDKN3 Subfamily: Protein Phosphatase - Dual specificity other Family: Protein Phosphatase Synonyms: CDKN3, CIP2, Kinase-associated phosphatase, KAP, KAP1, CDI1, CDK-associated phosphatase, Kinase associated phosphatase
Gene ID:	1033
NCBI Accession:	NP_005183
UniProt:	Q16667

Application Details

Application Notes:	Approved: WB Usage: ELISA titer using peptide based assay: 1:312500. Western Blot: Suggested dilution at 1 µg/mL in 5 % skim milk / PBS buffer, and HRP conjugated anti-Rabbit IgG should be diluted in 1:50000 - 100000 as second antibody.
Comment:	Target Species of Antibody: Human
Restrictions:	For Research Use only

Handling

Format:	Lyophilized
Reconstitution:	Distilled Water.
Concentration:	Lot specific
Buffer:	Lyophilized from PBS with 2 % sucrose
Handling Advice:	Avoid repeat freeze-thaw cycles.
Storage:	4 °C, -20 °C
Storage Comment:	Long term: -20°C, the use of 50% glycerol is recommended if storing aliquots in -20°C for long term use (up to 1 year)

Handling

Short term (less than 1 week): 4°C. Avoid freeze-thaw cycles.

Images

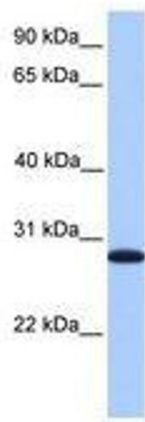


Image 1.