



[Go to Product page](#)

Datasheet for ABIN6738877

anti-FGFR10P antibody (AA 151-200)

1 Image

Overview

Quantity:	100 µL
Target:	FGFR10P
Binding Specificity:	AA 151-200
Reactivity:	Human, Pig, Rabbit
Host:	Rabbit
Clonality:	Polyclonal
Conjugate:	This FGFR10P antibody is un-conjugated
Application:	Western Blotting (WB)

Product Details

Immunogen:	Synthetic peptide located between aa151-200 of human FGFR10P (O95684, NP_919410). Percent identity by BLAST analysis: Human, Chimpanzee, Gorilla, Gibbon (100%), Monkey, Marmoset, Dog, Horse, Guinea pig (92%), Galago, Platypus (91%), Elephant, Bovine (85%), Rabbit (84%). Type of Immunogen: Synthetic peptide
Isotype:	IgG
Specificity:	Human FGFR10P
Predicted Reactivity:	Percent identity by BLAST analysis: Dog, Horse (92%) Rabbit (84%).
Purification:	Immunoaffinity purified

Target Details

Target:	FGFR10P
Alternative Name:	FGFR10P / FOP (FGFR10P Products)
Background:	Name/Gene ID: FGFR10P Synonyms: FGFR10P, FOP, FGFR1 oncogene partner
Gene ID:	11116
NCBI Accession:	NP_919410
UniProt:	O95684
Pathways:	M Phase , Maintenance of Protein Location , SARS-CoV-2 Protein Interactome

Application Details

Application Notes:	Approved: WB Usage: ELISA titer using peptide based assay: 1:312500. Western Blot: Suggested dilution at 1 µg/mL in 5 % skim milk / PBS buffer, and HRP conjugated anti-Rabbit IgG should be diluted in 1:50000 - 100000 as second antibody.
Comment:	Target Species of Antibody: Human
Restrictions:	For Research Use only

Handling

Format:	Lyophilized
Reconstitution:	Distilled Water.
Concentration:	Lot specific
Buffer:	Lyophilized from PBS with 2 % sucrose
Handling Advice:	Avoid repeat freeze-thaw cycles.
Storage:	4 °C,-20 °C
Storage Comment:	Long term: -20°C, the use of 50% glycerol is recommended if storing aliquots in -20°C for long term use (up to 1 year) Short term (less than 1 week): 4°C. Avoid freeze-thaw cycles.

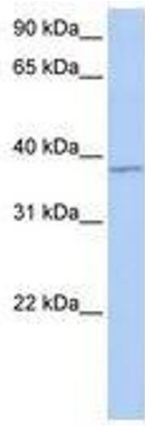


Image 1.