

Datasheet for ABIN6738891
anti-FAM46C antibody (AA 230-279)[Go to Product page](#)

1 Image

Overview

| | |
|----------------------|--|
| Quantity: | 100 µL |
| Target: | FAM46C |
| Binding Specificity: | AA 230-279 |
| Reactivity: | Human, Dog, Guinea Pig, Horse, Rabbit, Bat, Monkey |
| Host: | Rabbit |
| Clonality: | Polyclonal |
| Conjugate: | This FAM46C antibody is un-conjugated |
| Application: | Western Blotting (WB) |

Product Details

| | |
|-----------------------|---|
| Immunogen: | Synthetic peptide located between aa230-279 of human FAM46C (Q5VWP2, NP_060179). Percent identity by BLAST analysis: Human, Chimpanzee, Gorilla, Gibbon, Monkey, Galago, Marmoset, Elephant, Panda, Dog, Bat, Rabbit, Horse, Opossum, Guinea pig (100%), Mouse, Rat, Hamster, Bovine, Pig (92%). Type of Immunogen: Synthetic peptide |
| Isotype: | IgG |
| Specificity: | Human FAM46C |
| Predicted Reactivity: | Percent identity by BLAST analysis: Dog (100%) Mouse, Bovine (92%). |
| Purification: | Immunoaffinity purified |

Target Details

| | |
|-------------------|--|
| Target: | FAM46C |
| Alternative Name: | FAM46C (FAM46C Products) |
| Background: | Name/Gene ID: FAM46C Synonyms: FAM46C, Protein FAM46C |
| Gene ID: | 54855 |
| NCBI Accession: | NP_060179 |
| UniProt: | Q5VWP2 |

Application Details

| | |
|--------------------|--|
| Application Notes: | Approved: WB Usage: ELISA titer using peptide based assay: 1:1562500. Western Blot: Suggested dilution at 1 µg/mL in 5 % skim milk / PBS buffer, and HRP conjugated anti-Rabbit IgG should be diluted in 1:50000 - 100000 as second antibody. |
| Comment: | Target Species of Antibody: Human |
| Restrictions: | For Research Use only |

Handling

| | |
|------------------|---|
| Format: | Lyophilized |
| Reconstitution: | Distilled Water. |
| Concentration: | Lot specific |
| Buffer: | Lyophilized from PBS with 2 % sucrose |
| Handling Advice: | Avoid repeat freeze-thaw cycles. |
| Storage: | 4 °C, -20 °C |
| Storage Comment: | Long term: -20°C, the use of 50% glycerol is recommended if storing aliquots in -20°C for long term use (up to 1 year) Short term (less than 1 week): 4°C. Avoid freeze-thaw cycles. |

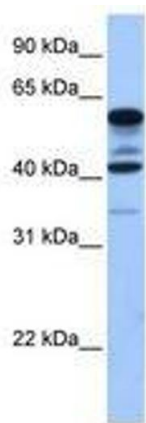


Image 1.