



[Go to Product page](#)

Datasheet for ABIN6738900
anti-AGBL5 antibody (AA 601-650)

1 Image

Overview

Quantity:	100 µL
Target:	AGBL5
Binding Specificity:	AA 601-650
Reactivity:	Human, Horse, Cow, Pig, Dog, Rabbit, Monkey
Host:	Rabbit
Clonality:	Polyclonal
Conjugate:	This AGBL5 antibody is un-conjugated
Application:	Western Blotting (WB)

Product Details

Immunogen:	Synthetic peptide located between aa601-650 of human AGBL5 (Q8NDL9, NP_068603). Percent identity by BLAST analysis: Human, Chimpanzee, Gorilla, Gibbon, Monkey, Galago, Marmoset, Elephant, Panda, Dog, Bovine, Rabbit, Horse, Pig (100%), Rat, Bat, Guinea pig (92%), Mouse (85%). Type of Immunogen: Synthetic peptide
Isotype:	IgG
Specificity:	Human AGBL5
Predicted Reactivity:	Percent identity by BLAST analysis: Dog, Rabbit, Horse, Pig (100%).
Purification:	Immunoaffinity purified

Target Details

Target: [AGBL5](#)

Alternative Name: [AGBL5 \(AGBL5 Products\)](#)

Background: Name/Gene ID: [AGBL5](#)

Synonyms: [AGBL5](#), [ATP/GTP-binding protein-like 5](#), [ATP/GTP binding protein-like 5](#), [CCP5](#)

Gene ID: [60509](#)

NCBI Accession: [NP_068603](#)

UniProt: [Q8NDL9](#)

Application Details

Application Notes: [Approved: WB](#)

Usage: ELISA titer using peptide based assay: 1:62500. Western Blot: Suggested dilution at 1 μ g/mL in 5 % skim milk / PBS buffer, and HRP conjugated anti-Rabbit IgG should be diluted in 1:50000 - 100000 as second antibody.

Comment: [Target Species of Antibody: Human](#)

Restrictions: [For Research Use only](#)

Handling

Format: [Lyophilized](#)

Reconstitution: [Distilled Water.](#)

Concentration: [Lot specific](#)

Buffer: [Lyophilized from PBS with 2 % sucrose](#)

Handling Advice: [Avoid repeat freeze-thaw cycles.](#)

Storage: [4 °C,-20 °C](#)

Storage Comment: [Long term: -20°C, the use of 50% glycerol is recommended if storing aliquots in -20°C for long term use \(up to 1 year\)](#)

[Short term \(less than 1 week\): 4°C. Avoid freeze-thaw cycles.](#)

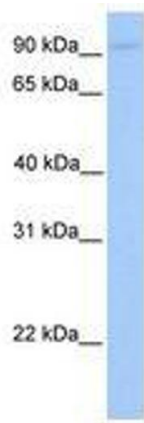


Image 1.