

Datasheet for ABIN6738904
anti-C20orf195 antibody (AA 110-159)



[Go to Product page](#)

1 Image

Overview

Quantity:	100 µL
Target:	C20orf195
Binding Specificity:	AA 110-159
Reactivity:	Human, Guinea Pig
Host:	Rabbit
Clonality:	Polyclonal
Conjugate:	This C20orf195 antibody is un-conjugated
Application:	Western Blotting (WB)

Product Details

Immunogen:	Synthetic peptide located between aa110-159 of human C20orf195 (Q9BVV2, NP_076964). Percent identity by BLAST analysis: Human, Chimpanzee, Gorilla (100%), Gibbon, Monkey, Galago, Marmoset, Panda, Bovine, Horse (92%), Elephant, Bat, Guinea pig (85%), Mouse, Rat, Hamster (84%). Type of Immunogen: Synthetic peptide
Isotype:	IgG
Specificity:	Human C20orf195
Predicted Reactivity:	Percent identity by BLAST analysis: Guinea pig (85%).
Purification:	Immunoaffinity purified

Target Details

Target:	C20orf195
Alternative Name:	C20orf195 (C20orf195 Products)
Background:	Name/Gene ID: C20orf195 Synonyms: C20orf195
Gene ID:	79025
NCBI Accession:	NP_076964
UniProt:	Q9BVV2

Application Details

Application Notes:	Approved: WB Usage: ELISA titer using peptide based assay: 1:1562500. Western Blot: Suggested dilution at 1 µg/mL in 5 % skim milk / PBS buffer, and HRP conjugated anti-Rabbit IgG should be diluted in 1:50000 - 100000 as second antibody.
Comment:	Target Species of Antibody: Human
Restrictions:	For Research Use only

Handling

Format:	Lyophilized
Reconstitution:	Distilled Water.
Concentration:	Lot specific
Buffer:	Lyophilized from PBS with 2 % sucrose
Handling Advice:	Avoid repeat freeze-thaw cycles.
Storage:	4 °C,-20 °C
Storage Comment:	Long term: -20°C, the use of 50% glycerol is recommended if storing aliquots in -20°C for long term use (up to 1 year) Short term (less than 1 week): 4°C. Avoid freeze-thaw cycles.

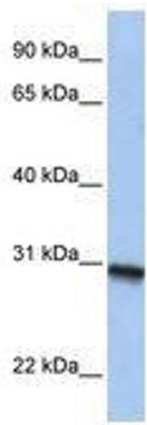


Image 1.