



[Go to Product page](#)

Datasheet for ABIN6738905
anti-ZC2HC1C antibody (AA 93-142)

1 Image

Overview

Quantity:	100 µL
Target:	ZC2HC1C
Binding Specificity:	AA 93-142
Reactivity:	Human, Rat, Mouse, Horse
Host:	Rabbit
Clonality:	Polyclonal
Conjugate:	This ZC2HC1C antibody is un-conjugated
Application:	Western Blotting (WB)

Product Details

Immunogen:	Synthetic peptide located between aa93-142 of human ZC2HC1C (Q53FD0, NP_001035895). Percent identity by BLAST analysis: Human, Chimpanzee, Gorilla, Orangutan, Gibbon, Monkey, Galago, Horse (100%), Marmoset, Elephant, Panda, Dog (92%), Rat, Hamster, Bat, Pig (85%), Mouse (78%). Type of Immunogen: Synthetic peptide
Isotype:	IgG
Specificity:	Human FAM164C / C14orf140
Predicted Reactivity:	Percent identity by BLAST analysis: Human, Orangutan, Monkey (100%) Dog (92%) Rat (85%).
Purification:	Immunoaffinity purified

Target Details

Target:	ZC2HC1C
Alternative Name:	ZC2HC1C (ZC2HC1C Products)
Background:	Name/Gene ID: ZC2HC1C Synonyms: ZC2HC1C, C14orf140, FAM164C, Protein FAM164C
Gene ID:	79696
NCBI Accession:	NP_001035895
UniProt:	Q53FD0

Application Details

Application Notes:	Approved: WB Usage: ELISA titer using peptide based assay: 1:312500. Western Blot: Suggested dilution at 1 µg/mL in 5 % skim milk / PBS buffer, and HRP conjugated anti-Rabbit IgG should be diluted in 1:50000 - 100000 as second antibody.
Comment:	Target Species of Antibody: Human
Restrictions:	For Research Use only

Handling

Format:	Lyophilized
Reconstitution:	Distilled Water.
Concentration:	Lot specific
Buffer:	Lyophilized from PBS with 2 % sucrose
Handling Advice:	Avoid repeat freeze-thaw cycles.
Storage:	4 °C,-20 °C
Storage Comment:	Long term: -20°C, the use of 50% glycerol is recommended if storing aliquots in -20°C for long term use (up to 1 year) Short term (less than 1 week): 4°C. Avoid freeze-thaw cycles.

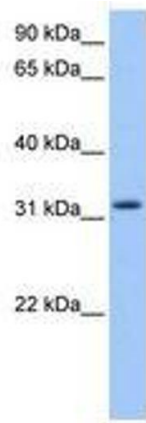


Image 1.