



[Go to Product page](#)

Datasheet for ABIN6738907  
**anti-CLMN antibody (AA 851-900)**

1 Image

Overview

Quantity:	100 µL
Target:	CLMN
Binding Specificity:	AA 851-900
Reactivity:	Human, Mouse, Cow, Dog
Host:	Rabbit
Clonality:	Polyclonal
Conjugate:	This CLMN antibody is un-conjugated
Application:	Western Blotting (WB)

Product Details

Immunogen:	Synthetic peptide located between aa851-900 of human CLMN (Q96JQ2, NP_079010). Percent identity by BLAST analysis: Human, Chimpanzee (100%), Gorilla, Gibbon (92%), Galago (90%), Monkey (84%), Mouse (76%).  Type of Immunogen: Synthetic peptide
Isotype:	IgG
Specificity:	Human CLMN
Predicted Reactivity:	Percent identity by BLAST analysis: Human (100%).
Purification:	Immunoaffinity purified

## Target Details

---

Target:	CLMN
Alternative Name:	CLMN ( <a href="#">CLMN Products</a> )
Background:	Name/Gene ID: CLMN  Synonyms: CLMN, KIAA1188, KIAA0500, Calmin
Gene ID:	79789
NCBI Accession:	<a href="#">NP_079010</a>
UniProt:	<a href="#">Q96JQ2</a>

## Application Details

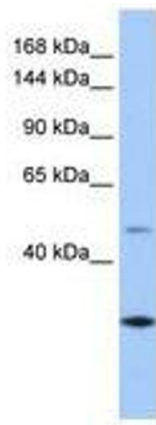
---

Application Notes:	Approved: WB  Usage: ELISA titer using peptide based assay: 1:62500. Western Blot: Suggested dilution at 1 $\mu$ g/mL in 5 % skim milk / PBS buffer, and HRP conjugated anti-Rabbit IgG should be diluted in 1:50000 - 100000 as second antibody.
Comment:	Target Species of Antibody: Human
Restrictions:	For Research Use only

## Handling

---

Format:	Lyophilized
Reconstitution:	Distilled Water.
Concentration:	Lot specific
Buffer:	Lyophilized from PBS with 2 % sucrose
Handling Advice:	Avoid repeat freeze-thaw cycles.
Storage:	4 °C, -20 °C
Storage Comment:	Long term: -20°C, the use of 50% glycerol is recommended if storing aliquots in -20°C for long term use (up to 1 year)  Short term (less than 1 week): 4°C. Avoid freeze-thaw cycles.



**Image 1.**