



[Go to Product page](#)

Datasheet for ABIN6738920

anti-Retinoic Acid Induced 12 (RAI12) (C-Term) antibody

1 Image

Overview

Quantity:	100 µL
Target:	Retinoic Acid Induced 12 (RAI12)
Binding Specificity:	C-Term
Reactivity:	Human
Host:	Rabbit
Clonality:	Polyclonal
Conjugate:	Un-conjugated
Application:	Western Blotting (WB)

Product Details

Immunogen:	Synthetic peptide from C-Terminus of human ELP5 (Q8TE02, NP_981958). Percent identity by BLAST analysis: Human (100%), Monkey (92%). Type of Immunogen: Synthetic peptide
Isotype:	IgG
Specificity:	Human C17orf81
Predicted Reactivity:	Percent identity by BLAST analysis: Human (100%).
Purification:	Immunoaffinity purified

Target Details

Target:	Retinoic Acid Induced 12 (RAI12)
---------	----------------------------------

Target Details

Alternative Name: [ELP5 \(RAI12 Products\)](#)

Background: Name/Gene ID: ELP5

Synonyms: ELP5, C17orf81, DERP6, HSPC002, MST071, MSTP071, S-phase 2 protein

Gene ID: 23587

NCBI Accession: [NP_981958](#)

UniProt: [Q8TE02](#)

Application Details

Application Notes: Approved: WB

Usage: ELISA titer using peptide based assay: 1:1562500. Western Blot: Suggested dilution at 1 µg/mL in 5 % skim milk / PBS buffer, and HRP conjugated anti-Rabbit IgG should be diluted in 1:50000 - 100000 as second antibody.

Comment: Target Species of Antibody: Human

Restrictions: For Research Use only

Handling

Format: Lyophilized

Reconstitution: Distilled Water.

Concentration: Lot specific

Buffer: Lyophilized from PBS with 2 % sucrose

Handling Advice: Avoid repeat freeze-thaw cycles.

Storage: 4 °C, -20 °C

Storage Comment: Long term: -20°C, the use of 50% glycerol is recommended if storing aliquots in -20°C for long term use (up to 1 year)

Short term (less than 1 week): 4°C. Avoid freeze-thaw cycles.

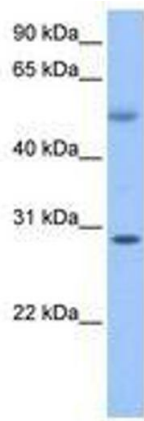


Image 1.