

Datasheet for ABIN6738921
anti-ATG10 antibody (C-Term)



[Go to Product page](#)

1 Image

Overview

Quantity:	100 µL
Target:	ATG10
Binding Specificity:	C-Term
Reactivity:	Human, Mouse, Rat, Rabbit, Dog, Cow, Guinea Pig
Host:	Rabbit
Clonality:	Polyclonal
Conjugate:	This ATG10 antibody is un-conjugated
Application:	Western Blotting (WB)

Product Details

Immunogen:	Synthetic peptide from C-Terminus of human ATG10 (Q9H0Y0, NP_113670). Percent identity by BLAST analysis: Human, Gorilla, Gibbon, Monkey, Mouse, Rat (100%), Galago, Marmoset (92%), Lizard (90%), Bovine, Bat, Rabbit, Opossum (85%). Type of Immunogen: Synthetic peptide
Isotype:	IgG
Specificity:	Human ATG10
Predicted Reactivity:	Percent identity by BLAST analysis: Human, Mouse, Rat (100%) Bovine, Rabbit (85%).
Purification:	Immunoaffinity purified

Target Details

Target:	ATG10
Alternative Name:	ATG10 (ATG10 Products)
Background:	Name/Gene ID: ATG10 Synonyms: ATG10, Autophagy-related protein 10, Autophagy related 10, APG10-like, DKFZP586I0418, Pp12616, APG10, APG10L
Gene ID:	83734
NCBI Accession:	NP_113670
UniProt:	Q9H0Y0
Pathways:	ER-Nucleus Signaling , Autophagy

Application Details

Application Notes:	Approved: WB Usage: ELISA titer using peptide based assay: 1:312500. Western Blot: Suggested dilution at 1 µg/mL in 5 % skim milk / PBS buffer, and HRP conjugated anti-Rabbit IgG should be diluted in 1:50000 - 100000 as second antibody.
Comment:	Target Species of Antibody: Human
Restrictions:	For Research Use only

Handling

Format:	Lyophilized
Reconstitution:	Distilled Water.
Concentration:	Lot specific
Buffer:	Lyophilized from PBS with 2 % sucrose
Handling Advice:	Avoid repeat freeze-thaw cycles.
Storage:	4 °C, -20 °C
Storage Comment:	Long term: -20°C, the use of 50% glycerol is recommended if storing aliquots in -20°C for long term use (up to 1 year) Short term (less than 1 week): 4°C. Avoid freeze-thaw cycles.

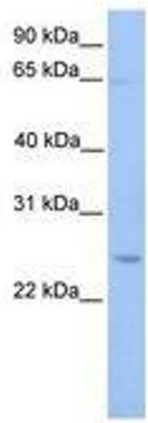


Image 1.