

Datasheet for ABIN6738923
anti-EPHX1 antibody (AA 182-231)[Go to Product page](#)

1 Image

Overview

Quantity:	100 µL
Target:	EPHX1
Binding Specificity:	AA 182-231
Reactivity:	Human, Mouse, Goat, Horse, Guinea Pig, Pig
Host:	Rabbit
Clonality:	Polyclonal
Conjugate:	This EPHX1 antibody is un-conjugated
Application:	Western Blotting (WB)

Product Details

Immunogen:	Synthetic peptide located between aa182-231 of human EPHX1 (P07099, NP_000111). Percent identity by BLAST analysis: Human, Gorilla, Orangutan, Gibbon, Monkey, Mouse, Goat, Elephant, Panda, Horse, Pig, Guinea pig, Zebra finch (100%), Galago, Marmoset, Rat, Dog, Bovine, Rabbit, Platypus, Zebrafish (92%), Turkey, Lizard, Stickleback (85%),
Isotype:	IgG
Specificity:	Human EPHX1
Predicted Reactivity:	Percent identity by BLAST analysis: Human, Mouse, Goat, Horse, Pig (100%) Dog, Bovine, Zebrafish (92%) Chicken (85%) Xenopus (84%).
Purification:	Immunoaffinity purified

Target Details

Target:	EPHX1
Alternative Name:	EPHX1 / Epoxide Hydrolase 1 (EPHX1 Products)
Background:	Name/Gene ID: EPHX1 Subfamily: Serine S33 Family: Protease Synonyms: EPHX1, Epoxide hydratase, Epoxide hydrolase, Epoxide hydrolase 1, HYL1, MEH, Microsomal epoxide hydrolase, EPHX, EPOX
Gene ID:	2052
NCBI Accession:	NP_000111
UniProt:	P07099

Application Details

Application Notes:	Approved: WB Usage: ELISA titer using peptide based assay: 1:12500. Western Blot: Suggested dilution at 1 µg/mL in 5 % skim milk / PBS buffer, and HRP conjugated anti-Rabbit IgG should be diluted in 1:50000 - 100000 as second antibody.
Comment:	Target Species of Antibody: Human
Restrictions:	For Research Use only

Handling

Format:	Lyophilized
Reconstitution:	Distilled Water.
Concentration:	Lot specific
Buffer:	Lyophilized from PBS with 2 % sucrose
Handling Advice:	Avoid repeat freeze-thaw cycles.
Storage:	4 °C, -20 °C
Storage Comment:	Long term: -20°C, the use of 50% glycerol is recommended if storing aliquots in -20°C for long term use (up to 1 year)

Handling

Short term (less than 1 week): 4°C. Avoid freeze-thaw cycles.

Images

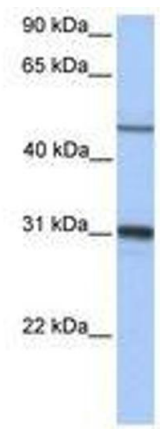


Image 1.