



[Go to Product page](#)

Datasheet for ABIN6738925
anti-ETFA antibody (N-Term)

1 Image

Overview

Quantity:	100 µL
Target:	ETFA
Binding Specificity:	N-Term
Reactivity:	Human, Mouse, Rat, Rabbit, Horse, Guinea Pig, Monkey
Host:	Rabbit
Clonality:	Polyclonal
Conjugate:	This ETFA antibody is un-conjugated
Application:	Western Blotting (WB)

Product Details

Immunogen:	Synthetic peptide from N-Terminus of human ETFA (P13804, NP_000117). Percent identity by BLAST analysis: Human, Gorilla, Gibbon, Monkey, Galago, Marmoset, Mouse, Rat, Rabbit, Guinea pig (100%), Orangutan, Dog, Bovine, Pig (92%), Elephant, Horse, Opossum (85%). Type of Immunogen: Synthetic peptide
Isotype:	IgG
Specificity:	Human ETFA
Predicted Reactivity:	Percent identity by BLAST analysis: Human, Mouse, Rat, Rabbit, Guinea pig (100%) Dog, Bovine, Pig (92%) Horse (85%).
Purification:	Immunoaffinity purified

Target Details

Target:	ETFA
Alternative Name:	ETFA (ETFA Products)
Background:	Name/Gene ID: ETFA Synonyms: ETFA, Alpha-ETF, GA2, EMA, Glutaric aciduria II
Gene ID:	2108
NCBI Accession:	NP_000117
UniProt:	P13804
Pathways:	SARS-CoV-2 Protein Interactome

Application Details

Application Notes:	Approved: WB Usage: ELISA titer using peptide based assay: 1:62500. Western Blot: Suggested dilution at 1 μ g/mL in 5 % skim milk / PBS buffer, and HRP conjugated anti-Rabbit IgG should be diluted in 1:50000 - 100000 as second antibody.
Comment:	Target Species of Antibody: Human
Restrictions:	For Research Use only

Handling

Format:	Lyophilized
Reconstitution:	Distilled Water.
Concentration:	Lot specific
Buffer:	Lyophilized from PBS with 2 % sucrose
Handling Advice:	Avoid repeat freeze-thaw cycles.
Storage:	4 °C,-20 °C
Storage Comment:	Long term: -20°C, the use of 50% glycerol is recommended if storing aliquots in -20°C for long term use (up to 1 year) Short term (less than 1 week): 4°C. Avoid freeze-thaw cycles.

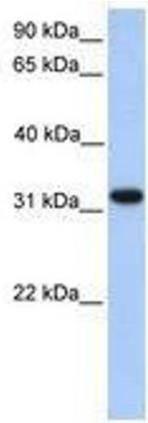


Image 1.