



[Go to Product page](#)

Datasheet for ABIN6738935
anti-IGFBP2 antibody (AA 182-231)

1 Image

Overview

Quantity:	100 µL
Target:	IGFBP2
Binding Specificity:	AA 182-231
Reactivity:	Human, Rat, Mouse, Cow, Pig, Sheep, Guinea Pig, Rabbit, Goat
Host:	Rabbit
Clonality:	Polyclonal
Conjugate:	This IGFBP2 antibody is un-conjugated
Application:	Western Blotting (WB)

Product Details

Immunogen:	Synthetic peptide located between aa182-231 of human IGFBP2 (P18065, NP_000588). Percent identity by BLAST analysis: Human, Chimpanzee, Gorilla, Gibbon, Monkey, Mouse, Rat, Sheep, Goat, Elephant, Bovine, Pig, Guinea pig (100%), Marmoset, Dog, Horse (92%). Type of Immunogen: Synthetic peptide
Isotype:	IgG
Specificity:	Human IGFBP2
Predicted Reactivity:	Percent identity by BLAST analysis: Human, Mouse, Rat, Bovine, Pig, Guinea pig (100%) Dog, Horse (92%).
Purification:	Immunoaffinity purified

Target Details

Target:	IGFBP2
Alternative Name:	IGFBP2 / IGF-BP53 (IGFBP2 Products)
Background:	Name/Gene ID: IGFBP2 Synonyms: IGFBP2, BP2, IGFBP-2, IGF-binding protein 2, IBP-2, IBP2, IGF-BP53
Gene ID:	3485
NCBI Accession:	NP_000588
UniProt:	P18065
Pathways:	Myometrial Relaxation and Contraction , Growth Factor Binding , Activated T Cell Proliferation

Application Details

Application Notes:	Approved: WB Usage: ELISA titer using peptide based assay: 1:12500. Western Blot: Suggested dilution at 1 µg/mL in 5 % skim milk / PBS buffer, and HRP conjugated anti-Rabbit IgG should be diluted in 1:50000 - 100000 as second antibody.
Comment:	Target Species of Antibody: Human
Restrictions:	For Research Use only

Handling

Format:	Lyophilized
Reconstitution:	Distilled Water.
Concentration:	Lot specific
Buffer:	Lyophilized from PBS with 2 % sucrose
Handling Advice:	Avoid repeat freeze-thaw cycles.
Storage:	4 °C,-20 °C
Storage Comment:	Long term: -20°C, the use of 50% glycerol is recommended if storing aliquots in -20°C for long term use (up to 1 year) Short term (less than 1 week): 4°C. Avoid freeze-thaw cycles.

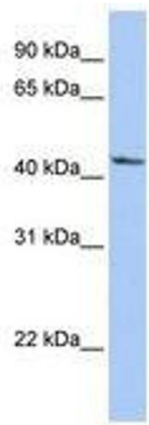


Image 1.