



[Go to Product page](#)

Datasheet for ABIN6738948
anti-ACADVL antibody (AA 38-87)

1 Image

Overview

Quantity:	100 µL
Target:	ACADVL
Binding Specificity:	AA 38-87
Reactivity:	Human, Rat, Cow, Dog, Horse, Rabbit, Zebrafish (Danio rerio), Pig, Hamster
Host:	Rabbit
Clonality:	Polyclonal
Conjugate:	This ACADVL antibody is un-conjugated
Application:	Western Blotting (WB)

Product Details

Immunogen:	Synthetic peptide located between aa38-87 of human ACADVL (P49748, NP_001029031). Percent identity by BLAST analysis: Human, Chimpanzee, Gorilla, Monkey, Rat, Hamster, Panda, Dog, Bovine, Horse, Pig, Opossum, Platypus (100%), Gibbon, Galago, Marmoset, Mouse, Elephant, Bat, Guinea pig (92%), Rabbit (85%). Type of Immunogen: Synthetic peptide
Isotype:	IgG
Specificity:	Human ACADVL
Predicted Reactivity:	Percent identity by BLAST analysis: Human, Rat, Dog, Horse, Pig (100%) Mouse, Guinea pig (92%) Rabbit (85%).
Purification:	Immunoaffinity purified

Target Details

Target: ACADVL

Alternative Name: ACADVL ([ACADVL Products](#))

Background: Name/Gene ID: ACADVL

Synonyms: ACADVL, ACAD6, LCACD, VLCAD

Gene ID: 37

NCBI Accession: [NP_001029031](#)

UniProt: [P49748](#)

Pathways: [ER-Nucleus Signaling](#), [Monocarboxylic Acid Catabolic Process](#)

Application Details

Application Notes: Approved: WB

Usage: ELISA titer using peptide based assay: 1:312500. Western Blot: Suggested dilution at 1 µg/mL in 5 % skim milk / PBS buffer, and HRP conjugated anti-Rabbit IgG should be diluted in 1:50000 - 100000 as second antibody.

Comment: Target Species of Antibody: Human

Restrictions: For Research Use only

Handling

Format: Lyophilized

Reconstitution: Distilled Water.

Concentration: Lot specific

Buffer: Lyophilized from PBS with 2 % sucrose

Handling Advice: Avoid repeat freeze-thaw cycles.

Storage: 4 °C,-20 °C

Storage Comment: Long term: -20°C, the use of 50% glycerol is recommended if storing aliquots in -20°C for long term use (up to 1 year)

Short term (less than 1 week): 4°C. Avoid freeze-thaw cycles.

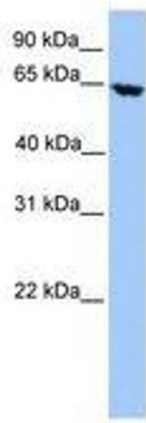


Image 1.