



[Go to Product page](#)

Datasheet for ABIN6738954
anti-PRSS54 antibody (C-Term)

1 Image

Overview

Quantity:	100 µL
Target:	PRSS54
Binding Specificity:	C-Term
Reactivity:	Human
Host:	Rabbit
Clonality:	Polyclonal
Conjugate:	This PRSS54 antibody is un-conjugated
Application:	Western Blotting (WB)

Product Details

Immunogen:	Synthetic peptide from C-Terminus of human PRSS54 (Q6PEW0, NP_001073961). Percent identity by BLAST analysis: Human (100%), Chimpanzee (92%), Marmoset, Horse (90%), Gibbon (85%). Type of Immunogen: Synthetic peptide
Isotype:	IgG
Specificity:	Human PRSS54 / KLKBL4
Predicted Reactivity:	Percent identity by BLAST analysis: Human (100%).
Purification:	Immunoaffinity purified

Target Details

Target:	PRSS54
Alternative Name:	PRSS54 / KLKBL4 (PRSS54 Products)
Background:	Name/Gene ID: PRSS54 Subfamily: Provisional protease Family: Protease Synonyms: PRSS54, CT67, Inactive serine protease 54, Cancer/testis antigen 67, KLKBL4, Protease, serine, 54
Gene ID:	221191
NCBI Accession:	NP_001073961
UniProt:	Q6PEW0

Application Details

Application Notes:	Approved: WB Usage: ELISA titer using peptide based assay: 1:312500. Western Blot: Suggested dilution at 1 µg/mL in 5 % skim milk / PBS buffer, and HRP conjugated anti-Rabbit IgG should be diluted in 1:50000 - 100000 as second antibody.
Comment:	Target Species of Antibody: Human
Restrictions:	For Research Use only

Handling

Format:	Lyophilized
Reconstitution:	Distilled Water.
Concentration:	Lot specific
Buffer:	Lyophilized from PBS with 2 % sucrose
Handling Advice:	Avoid repeat freeze-thaw cycles.
Storage:	4 °C, -20 °C
Storage Comment:	Long term: -20°C, the use of 50% glycerol is recommended if storing aliquots in -20°C for long term use (up to 1 year)

Handling

Short term (less than 1 week): 4°C. Avoid freeze-thaw cycles.

Images

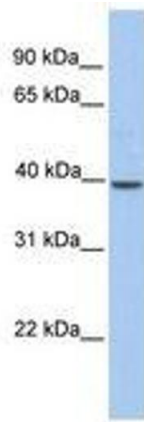


Image 1.