



[Go to Product page](#)

Datasheet for ABIN6738959
anti-IFRD1 antibody (AA 290-339)

1 Image

Overview

Quantity:	100 µL
Target:	IFRD1
Binding Specificity:	AA 290-339
Reactivity:	Human, Mouse, Rat, Cow, Dog, Guinea Pig, Horse, Rabbit
Host:	Rabbit
Clonality:	Polyclonal
Conjugate:	This IFRD1 antibody is un-conjugated
Application:	Western Blotting (WB)

Product Details

Immunogen:	Synthetic peptide located between aa290-339 of human IFRD1 (O00458, NP_001541). Percent identity by BLAST analysis: Human, Mouse, Rat, Dog, Bovine, Rabbit, Horse, Guinea pig (100%), Zebrafish (91%), Xenopus (83%).
Isotype:	IgG
Specificity:	Human IFRD1
Predicted Reactivity:	Percent identity by BLAST analysis: Human, Mouse, Rat, Dog, Bovine, Pig, Guinea pig, Chicken (100%) Zebrafish (91%) Xenopus (83%).
Purification:	Immunoaffinity purified

Target Details

Target:	IFRD1
---------	-------

Target Details

Alternative Name:	IFRD1 / TIS7 (IFRD1 Products)
Background:	Name/Gene ID: IFRD1 Synonyms: IFRD1, PC4, TIS7, Pheochromocytoma cell-4, TPA induced sequence 7
Gene ID:	3475
NCBI Accession:	NP_001541
UniProt:	O00458

Application Details

Application Notes:	Approved: WB Usage: ELISA titer using peptide based assay: 1:312500. Western Blot: Suggested dilution at 1 μ g/mL in 5 % skim milk / PBS buffer, and HRP conjugated anti-Rabbit IgG should be diluted in 1:50000 - 100000 as second antibody.
Comment:	Target Species of Antibody: Human
Restrictions:	For Research Use only

Handling

Format:	Lyophilized
Reconstitution:	Distilled Water.
Concentration:	Lot specific
Buffer:	Lyophilized from PBS with 2 % sucrose
Handling Advice:	Avoid repeat freeze-thaw cycles.
Storage:	4 °C, -20 °C
Storage Comment:	Long term: -20°C, the use of 50% glycerol is recommended if storing aliquots in -20°C for long term use (up to 1 year) Short term (less than 1 week): 4°C. Avoid freeze-thaw cycles.

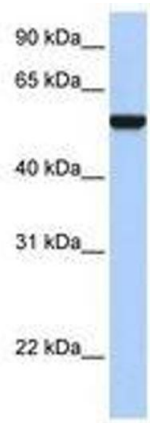


Image 1.