

Datasheet for ABIN6738965  
**anti-FKBP3 antibody (C-Term)**[Go to Product page](#)

## 1 Image

## Overview

Quantity:	100 µL
Target:	FKBP3
Binding Specificity:	C-Term
Reactivity:	Human, Mouse, Rat, Cow, Horse, Rabbit, Dog, Guinea Pig, Pig, Chicken, Monkey, Bat
Host:	Rabbit
Clonality:	Polyclonal
Conjugate:	This FKBP3 antibody is un-conjugated
Application:	Western Blotting (WB)

## Product Details

Immunogen:	Synthetic peptide from C-Terminus of human FKBP3 (Q00688, NP_002004). Percent identity by BLAST analysis: Human, Chimpanzee, Gorilla, Gibbon, Marmoset, Mouse, Rat, Elephant, Dog, Bovine, Bat, Rabbit, Horse, Pig, Opossum, Guinea pig, Turkey, Zebra finch, Chicken, Platypus (100%), Galago, Xenopus, Zebrafish (92%), Trout, Catfish, Salmon (85%).  Type of Immunogen: Synthetic peptide
Isotype:	IgG
Specificity:	Human FKBP3
Predicted Reactivity:	Percent identity by BLAST analysis: Human, Mouse, Rat, Dog, Bovine, Rabbit, Pig, Chicken (100%) Xenopus, Zebrafish (92%).
Purification:	Immunoaffinity purified

## Target Details

Target:	FKBP3
Alternative Name:	FKBP25 / FKBP3 ( <a href="#">FKBP3 Products</a> )
Background:	<p>Name/Gene ID: FKBP3</p> <p>Synonyms: FKBP3, 25 kDa FK506-binding protein, 25 kDa FKBP, FKBP-3, Immunophilin FKBP25, FK506-binding protein 3, FK506-binding protein 3 (25kD), PPlase FKBP3, Rapamycin binding protein, Rotamase, PPlase, FK506 binding protein 3, 25 kDa, FKBP-25, FKBP25</p>
Gene ID:	2287
NCBI Accession:	<a href="#">NP_002004</a>
UniProt:	<a href="#">Q00688</a>

## Application Details

Application Notes:	<p>Approved: WB</p> <p>Usage: ELISA titer using peptide based assay: 1:312500. Western Blot: Suggested dilution at 1 µg/mL in 5 % skim milk / PBS buffer, and HRP conjugated anti-Rabbit IgG should be diluted in 1:50000 - 100000 as second antibody.</p>
Comment:	Target Species of Antibody: Human
Restrictions:	For Research Use only

## Handling

Format:	Lyophilized
Reconstitution:	Distilled Water.
Concentration:	Lot specific
Buffer:	Lyophilized from PBS with 2 % sucrose
Handling Advice:	Avoid repeat freeze-thaw cycles.
Storage:	4 °C, -20 °C
Storage Comment:	<p>Long term: -20°C, the use of 50% glycerol is recommended if storing aliquots in -20°C for long term use (up to 1 year)</p> <p>Short term (less than 1 week): 4°C. Avoid freeze-thaw cycles.</p>

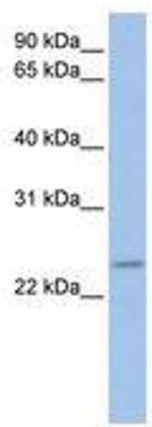


Image 1.