

Datasheet for ABIN6738988
anti-GRK5 antibody (AA 290-339)[Go to Product page](#)

1 Image

Overview

Quantity:	100 µL
Target:	GRK5
Binding Specificity:	AA 290-339
Reactivity:	Human, Mouse, Rat, Cow, Dog, Zebrafish (Danio rerio), Guinea Pig, Chicken, Monkey, Pig
Host:	Rabbit
Clonality:	Polyclonal
Conjugate:	This GRK5 antibody is un-conjugated
Application:	Western Blotting (WB)

Product Details

Immunogen:	Synthetic peptide located between aa290-339 of human GRK5 (P34947, NP_005299). Percent identity by BLAST analysis: Human, Chimpanzee, Gorilla, Orangutan, Gibbon, Monkey, Galago, Marmoset, Mouse, Rat, Elephant, Dog, Pig, Opossum, Guinea pig, Turkey, Zebra finch, Chicken, Platypus (100%), Bat, Horse (92%), Bovine, Rabbit, Xenopus, Stickleback, Zebrafish, Nematode (85%). Type of Immunogen: Synthetic peptide
Isotype:	IgG
Specificity:	Human GRK5
Predicted Reactivity:	Percent identity by BLAST analysis: Human, Mouse, Rat, Dog, Pig, Guinea pig, Chicken (100%) Horse (92%) Bovine (85%).

Product Details

Purification: Immunoaffinity purified

Target Details

Target: GRK5

Alternative Name: GRK5 ([GRK5 Products](#))

Background: Name/Gene ID: GRK5
Subfamily: GPRK
Family: Protein Kinase

Synonyms: GRK5, FP2025, GPRK5

Gene ID: 2869

NCBI Accession: [NP_005299](#)

UniProt: [P34947](#)

Pathways: [Myometrial Relaxation and Contraction, Regulation of G-Protein Coupled Receptor Protein Signaling](#)

Application Details

Application Notes: Approved: WB

Usage: ELISA titer using peptide based assay: 1:1562500. Western Blot: Suggested dilution at 1 µg/mL in 5 % skim milk / PBS buffer, and HRP conjugated anti-Rabbit IgG should be diluted in 1:50000 - 100000 as second antibody.

Comment: Target Species of Antibody: Human

Restrictions: For Research Use only

Handling

Format: Lyophilized

Reconstitution: Distilled Water.

Concentration: Lot specific

Buffer: Lyophilized from PBS with 2 % sucrose

Handling

Handling Advice:	Avoid repeat freeze-thaw cycles.
Storage:	4 °C,-20 °C
Storage Comment:	Long term: -20°C, the use of 50% glycerol is recommended if storing aliquots in -20°C for long term use (up to 1 year) Short term (less than 1 week): 4°C. Avoid freeze-thaw cycles.

Images

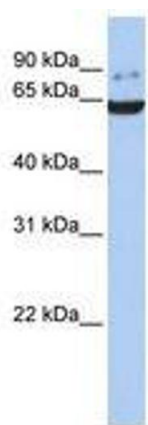


Image 1.