



[Go to Product page](#)

Datasheet for ABIN6738990
anti-INPP5B antibody (AA 614-663)

1 Image

Overview

Quantity:	100 µL
Target:	INPP5B
Binding Specificity:	AA 614-663
Reactivity:	Human, Dog, Rabbit, Monkey
Host:	Rabbit
Clonality:	Polyclonal
Conjugate:	This INPP5B antibody is un-conjugated
Application:	Western Blotting (WB)

Product Details

Immunogen:	Synthetic peptide located between aa614-663 of human INPP5B (P32019, NP_005531). Percent identity by BLAST analysis: Human, Chimpanzee, Gorilla, Monkey, Marmoset (100%), Mouse, Elephant, Pig, Guinea pig (92%), Rat, Horse (91%), Galago, Panda, Dog, Bat, Platypus (84%). Type of Immunogen: Synthetic peptide
Isotype:	IgG
Specificity:	Human INPP5B
Predicted Reactivity:	Percent identity by BLAST analysis: Mouse, Pig, Guinea pig (92%) Rat, Horse (91%) Dog (84%).
Purification:	Immunoaffinity purified

Target Details

Target: INPP5B

Alternative Name: INPP5B ([INPP5B Products](#))

Background: Name/Gene ID: INPP5B
Family: Inositol Phosphatase

Synonyms: INPP5B, 5PTASE, OCRL2, Phosphoinositide 5-phosphatase

Gene ID: 3633

NCBI Accession: [NP_005531](#)

UniProt: [P32019](#)

Application Details

Application Notes: Approved: WB

Usage: ELISA titer using peptide based assay: 1:1562500. Western Blot: Suggested dilution at 1 µg/mL in 5 % skim milk / PBS buffer, and HRP conjugated anti-Rabbit IgG should be diluted in 1:50000 - 100000 as second antibody.

Comment: Target Species of Antibody: Human

Restrictions: For Research Use only

Handling

Format: Lyophilized

Reconstitution: Distilled Water.

Concentration: Lot specific

Buffer: Lyophilized from PBS with 2 % sucrose

Handling Advice: Avoid repeat freeze-thaw cycles.

Storage: 4 °C, -20 °C

Storage Comment: Long term: -20°C, the use of 50% glycerol is recommended if storing aliquots in -20°C for long term use (up to 1 year)

Short term (less than 1 week): 4°C. Avoid freeze-thaw cycles.

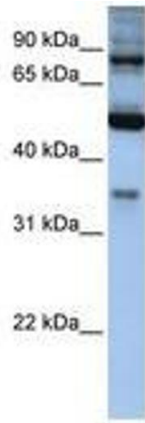


Image 1.