



[Go to Product page](#)

Datasheet for ABIN6739002  
**anti-PHLDA1 antibody (AA 218-267)**

1 Image

Overview

Quantity:	100 µL
Target:	PHLDA1
Binding Specificity:	AA 218-267
Reactivity:	Human, Mouse, Cow, Guinea Pig, Horse, Rabbit, Monkey, Pig
Host:	Rabbit
Clonality:	Polyclonal
Conjugate:	This PHLDA1 antibody is un-conjugated
Application:	Western Blotting (WB)

Product Details

Immunogen:	Synthetic peptide located between aa218-267 of human PHLDA1 (Q8WV24, NP_031376). Percent identity by BLAST analysis: Human, Chimpanzee, Gorilla, Gibbon, Monkey, Galago, Marmoset, Mouse, Elephant, Panda, Bovine, Rabbit, Horse, Pig, Guinea pig (100%), Rat, Dog, Opossum (92%).  Type of Immunogen: Synthetic peptide
Isotype:	IgG
Specificity:	Human PHLDA1
Predicted Reactivity:	Percent identity by BLAST analysis: Human, Bovine, Rabbit, Horse, Guinea pig (100%) Rat, Dog (92%).
Purification:	Immunoaffinity purified

## Target Details

---

Target:	PHLDA1
Alternative Name:	PHLDA1 ( <a href="#">PHLDA1 Products</a> )
Background:	Name/Gene ID: PHLDA1  Synonyms: PHLDA1, DT1P1B11, PHRIP, PQ-rich protein, Proline-histidine rich protein, TDAG51, PQR protein
Gene ID:	22822
NCBI Accession:	<a href="#">NP_031376</a>
UniProt:	<a href="#">Q8WV24</a>

## Application Details

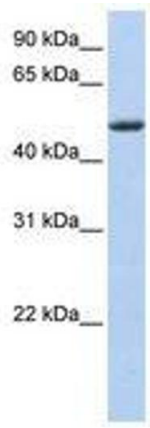
---

Application Notes:	Approved: WB  Usage: ELISA titer using peptide based assay: 1:62500. Western Blot: Suggested dilution at 1 $\mu$ g/mL in 5 % skim milk / PBS buffer, and HRP conjugated anti-Rabbit IgG should be diluted in 1:50000 - 100000 as second antibody.
Comment:	Target Species of Antibody: Human
Restrictions:	For Research Use only

## Handling

---

Format:	Lyophilized
Reconstitution:	Distilled Water.
Concentration:	Lot specific
Buffer:	Lyophilized from PBS with 2 % sucrose
Handling Advice:	Avoid repeat freeze-thaw cycles.
Storage:	4 °C,-20 °C
Storage Comment:	Long term: -20°C, the use of 50% glycerol is recommended if storing aliquots in -20°C for long term use (up to 1 year)  Short term (less than 1 week): 4°C. Avoid freeze-thaw cycles.



**Image 1.**