

Datasheet for ABIN6739010
anti-CHORDC1 antibody (AA 180-229)



[Go to Product page](#)

1 Image

Overview

Quantity:	100 µL
Target:	CHORDC1
Binding Specificity:	AA 180-229
Reactivity:	Human, Mouse, Rat, Horse, Cow, Dog, Rabbit, Guinea Pig, Hamster, Bat, Monkey, Chicken, Pig
Host:	Rabbit
Clonality:	Polyclonal
Conjugate:	This CHORDC1 antibody is un-conjugated
Application:	Western Blotting (WB)

Product Details

Immunogen:	<p>Synthetic peptide located between aa180-229 of human CHORDC1 (Q9UHD1, NP_036256). Percent identity by BLAST analysis: Human, Chimpanzee, Gorilla, Orangutan, Gibbon, Monkey, Galago, Marmoset, Mouse, Rat, Hamster, Elephant, Panda, Dog, Bovine, Bat, Rabbit, Horse, Pig, Opossum, Guinea pig, Turkey, Zebra finch, Chicken, Platypus (100%), Lizard, Xenopus, Catfish, Stickleback, Zebrafish (92%).</p> <p>Type of Immunogen: Synthetic peptide</p>
Isotype:	IgG
Specificity:	Human CHORDC1
Predicted Reactivity:	Percent identity by BLAST analysis: Human, Dog, Pig, Chicken (100%) Zebrafish (92%).
Purification:	Immunoaffinity purified

Target Details

Target:	CHORDC1
Alternative Name:	CHORDC1 / CHP1 (CHORDC1 Products)
Background:	Name/Gene ID: CHORDC1 Synonyms: CHORDC1, CHORD-containing protein 1, CHP-1, Protein morgana
Gene ID:	26973
NCBI Accession:	NP_036256
UniProt:	Q9UHD1

Application Details

Application Notes:	Approved: WB Usage: ELISA titer using peptide based assay: 1:62500. Western Blot: Suggested dilution at 1 μ g/mL in 5 % skim milk / PBS buffer, and HRP conjugated anti-Rabbit IgG should be diluted in 1:50000 - 100000 as second antibody.
Comment:	Target Species of Antibody: Human
Restrictions:	For Research Use only

Handling

Format:	Lyophilized
Reconstitution:	Distilled Water.
Concentration:	Lot specific
Buffer:	Lyophilized from PBS with 2 % sucrose
Handling Advice:	Avoid repeat freeze-thaw cycles.
Storage:	4 °C, -20 °C
Storage Comment:	Long term: -20°C, the use of 50% glycerol is recommended if storing aliquots in -20°C for long term use (up to 1 year) Short term (less than 1 week): 4°C. Avoid freeze-thaw cycles.

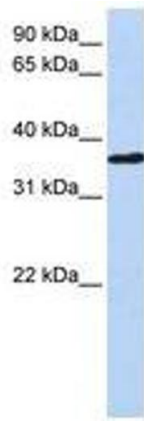


Image 1.