



[Go to Product page](#)

Datasheet for ABIN6739011
anti-FAM50B antibody (AA 108-157)

1 Image

Overview

Quantity:	100 µL
Target:	FAM50B
Binding Specificity:	AA 108-157
Reactivity:	Human, Monkey
Host:	Rabbit
Clonality:	Polyclonal
Conjugate:	This FAM50B antibody is un-conjugated
Application:	Western Blotting (WB)

Product Details

Immunogen:	Synthetic peptide located between aa108-157 of human FAM50B (Q9Y247, NP_036267). Percent identity by BLAST analysis: Human, Chimpanzee, Gorilla, Gibbon, Monkey (100%). Type of Immunogen: Synthetic peptide
Isotype:	IgG
Specificity:	Human FAM50B
Predicted Reactivity:	Percent identity by BLAST analysis: Human, Monkey (100%).
Purification:	Immunoaffinity purified

Target Details

Target:	FAM50B
---------	--------

Target Details

Alternative Name: [FAM50B \(FAM50B Products\)](#)

Background: Name/Gene ID: FAM50B

Synonyms: FAM50B, D6S2654E, X5L, Protein FAM50B, Protein XAP-5-like

Gene ID: 26240

NCBI Accession: [NP_036267](#)

UniProt: [Q9Y247](#)

Application Details

Application Notes: Approved: WB

Usage: ELISA titer using peptide based assay: 1:12500. Western Blot: Suggested dilution at 1 μ g/mL in 5 % skim milk / PBS buffer, and HRP conjugated anti-Rabbit IgG should be diluted in 1:50000 - 100000 as second antibody.

Comment: Target Species of Antibody: Human

Restrictions: For Research Use only

Handling

Format: Lyophilized

Reconstitution: Distilled Water.

Concentration: Lot specific

Buffer: Lyophilized from PBS with 2 % sucrose

Handling Advice: Avoid repeat freeze-thaw cycles.

Storage: 4 °C, -20 °C

Storage Comment: Long term: -20°C, the use of 50% glycerol is recommended if storing aliquots in -20°C for long term use (up to 1 year)

Short term (less than 1 week): 4°C. Avoid freeze-thaw cycles.

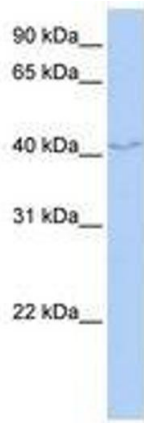


Image 1.