

Datasheet for ABIN6739022
anti-VPS4A antibody (AA 74-123)



[Go to Product page](#)

1 Image

Overview

Quantity:	100 µL
Target:	VPS4A
Binding Specificity:	AA 74-123
Reactivity:	Human, Mouse, Rat, Rabbit, Guinea Pig, Hamster, Monkey
Host:	Rabbit
Clonality:	Polyclonal
Conjugate:	This VPS4A antibody is un-conjugated
Application:	Western Blotting (WB)

Product Details

Immunogen:	Synthetic peptide located between aa74-123 of human VPS4A (Q9UN37, NP_037377). Percent identity by BLAST analysis: Human, Chimpanzee, Monkey, Marmoset, Mouse, Rat, Hamster, Elephant, Rabbit, Guinea pig (100%), Gibbon, Galago, Dog, Bovine, Horse (92%). Type of Immunogen: Synthetic peptide
Isotype:	IgG
Specificity:	Human VPS4A
Predicted Reactivity:	Percent identity by BLAST analysis: Human, Mouse, Rat, Rabbit (100%) Dog, Bovine (92%).
Purification:	Immunoaffinity purified

Target Details

Target:	VPS4A
Alternative Name:	VPS4 (VPS4A Products)
Background:	Name/Gene ID: VPS4A Synonyms: VPS4A, HVPS4, Protein SKD2, SKD1, SKD1A, SKD2, VPS4, Vacuolar sorting protein 4, VPS4-1, SKD1-homolog
NCBI Accession:	NP_037377
UniProt:	Q9UN37
Pathways:	Microtubule Dynamics , CXCR4-mediated Signaling Events

Application Details

Application Notes:	Approved: WB Usage: ELISA titer using peptide based assay: 1:62500. Western Blot: Suggested dilution at 1 μ g/mL in 5 % skim milk / PBS buffer, and HRP conjugated anti-Rabbit IgG should be diluted in 1:50000 - 100000 as second antibody.
Comment:	Target Species of Antibody: Human
Restrictions:	For Research Use only

Handling

Format:	Lyophilized
Reconstitution:	Distilled Water.
Concentration:	Lot specific
Buffer:	Lyophilized from PBS with 2 % sucrose
Handling Advice:	Avoid repeat freeze-thaw cycles.
Storage:	4 °C,-20 °C
Storage Comment:	Long term: -20°C, the use of 50% glycerol is recommended if storing aliquots in -20°C for long term use (up to 1 year) Short term (less than 1 week): 4°C. Avoid freeze-thaw cycles.

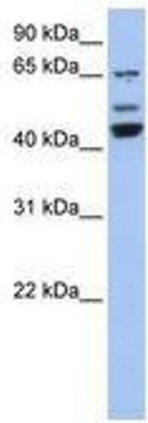


Image 1.