



[Go to Product page](#)

Datasheet for ABIN6739023  
**anti-C12ORF24 antibody (AA 38-87)**

1 Image

Overview

Quantity:	100 µL
Target:	C12ORF24 (C12orf24)
Binding Specificity:	AA 38-87
Reactivity:	Human, Pig
Host:	Rabbit
Clonality:	Polyclonal
Conjugate:	This C12ORF24 antibody is un-conjugated
Application:	Western Blotting (WB)

Product Details

Immunogen:	Synthetic peptide located between aa38-87 of human FAM216A (Q8WUB2, NP_037432). Percent identity by BLAST analysis: Human, Gibbon (100%), Monkey (92%), Marmoset (85%).  Type of Immunogen: Synthetic peptide
Isotype:	IgG
Specificity:	Human C12orf24
Predicted Reactivity:	Percent identity by BLAST analysis:
Purification:	Immunoaffinity purified

Target Details

Target:	C12ORF24 (C12orf24)
---------	---------------------

## Target Details

---

Alternative Name: HSU79274 / C12orf24 ([C12orf24 Products](#))

Background: Name/Gene ID: FAM216A

Synonyms: FAM216A, C12orf24, HSU79274, Protein FAM216A

Gene ID: 29902

NCBI Accession: [NP\\_037432](#)

UniProt: [Q8WUB2](#)

## Application Details

---

Application Notes: Approved: WB

Usage: ELISA titer using peptide based assay: 1:312500. Western Blot: Suggested dilution at 1  $\mu$ g/mL in 5 % skim milk / PBS buffer, and HRP conjugated anti-Rabbit IgG should be diluted in 1:50000 - 100000 as second antibody.

Comment: Target Species of Antibody: Human

Restrictions: For Research Use only

## Handling

---

Format: Lyophilized

Reconstitution: Distilled Water.

Concentration: Lot specific

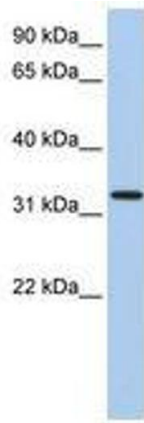
Buffer: Lyophilized from PBS with 2 % sucrose

Handling Advice: Avoid repeat freeze-thaw cycles.

Storage: 4 °C, -20 °C

Storage Comment: Long term: -20°C, the use of 50% glycerol is recommended if storing aliquots in -20°C for long term use (up to 1 year)

Short term (less than 1 week): 4°C. Avoid freeze-thaw cycles.



**Image 1.**