



Datasheet for ABIN6739043 **anti-PPIL2 antibody (AA 398-447)**



[Go to Product page](#)

1 Image

Overview

| | |
|----------------------|--|
| Quantity: | 100 µL |
| Target: | PPIL2 |
| Binding Specificity: | AA 398-447 |
| Reactivity: | Human, Mouse, Rat, Cow, Dog, Guinea Pig, Rabbit, Horse, Bat, Hamster, Monkey, Pig, Chicken |
| Host: | Rabbit |
| Clonality: | Polyclonal |
| Conjugate: | This PPIL2 antibody is un-conjugated |
| Application: | Western Blotting (WB) |

Product Details

| | |
|-----------------------|---|
| Immunogen: | Synthetic peptide located between aa398-447 of human PPIL2 (Q13356, NP_055152). Percent identity by BLAST analysis: Human, Chimpanzee, Gorilla, Gibbon, Galago, Marmoset, Mouse, Rat, Hamster, Elephant, Panda, Dog, Bovine, Bat, Rabbit, Horse, Pig, Opossum, Guinea pig, Turkey, Zebra finch, Chicken (100%), Zebrafish (92%), Stickleback (84%). Type of Immunogen: Synthetic peptide |
| Isotype: | IgG |
| Specificity: | Human PPIL2 |
| Predicted Reactivity: | Percent identity by BLAST analysis: Human, Mouse, Rat, Dog, Bovine, Rabbit, Horse, Pig, Chicken (100%) Zebrafish (92%). |
| Purification: | Immunoaffinity purified |

Target Details

| | |
|-------------------|---|
| Target: | PPIL2 |
| Alternative Name: | PPIL2 / CYP60 (PPIL2 Products) |
| Background: | Name/Gene ID: PPIL2 Synonyms: PPIL2, CYC4, CYP60, Cyclophilin-60, HCyP-60, Rotamase PPIL2, PPIase, Cyclophilin, 60 kDa, Cyp-60 |
| Gene ID: | 23759 |
| NCBI Accession: | NP_055152 |
| UniProt: | Q13356 |

Application Details

| | |
|--------------------|---|
| Application Notes: | Approved: WB Usage: ELISA titer using peptide based assay: 1:62500. Western Blot: Suggested dilution at 1 μ g/mL in 5 % skim milk / PBS buffer, and HRP conjugated anti-Rabbit IgG should be diluted in 1:50000 - 100000 as second antibody. |
| Comment: | Target Species of Antibody: Human |
| Restrictions: | For Research Use only |

Handling

| | |
|------------------|---|
| Format: | Lyophilized |
| Reconstitution: | Distilled Water. |
| Concentration: | Lot specific |
| Buffer: | Lyophilized from PBS with 2 % sucrose |
| Handling Advice: | Avoid repeat freeze-thaw cycles. |
| Storage: | 4 °C,-20 °C |
| Storage Comment: | Long term: -20°C, the use of 50% glycerol is recommended if storing aliquots in -20°C for long term use (up to 1 year) Short term (less than 1 week): 4°C. Avoid freeze-thaw cycles. |

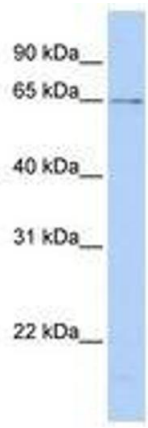


Image 1.