



[Go to Product page](#)

Datasheet for ABIN6739059
anti-KAT2B antibody (AA 686-735)

1 Image

Overview

Quantity:	100 µL
Target:	KAT2B
Binding Specificity:	AA 686-735
Reactivity:	Human, Mouse
Host:	Rabbit
Clonality:	Polyclonal
Conjugate:	This KAT2B antibody is un-conjugated
Application:	Western Blotting (WB)

Product Details

Immunogen:	Synthetic peptide located between aa686-735 of human KAT2B (Q92831, NP_003875). Percent identity by BLAST analysis: Human, Chimpanzee, Gorilla, Gibbon, Monkey (100%), Galago, Marmoset, Elephant, Dog, Horse, Guinea pig (92%), Mouse, Bat (85%), Xenopus (83%). Type of Immunogen: Synthetic peptide
Isotype:	IgG
Specificity:	Human KAT2B / PCAF
Predicted Reactivity:	Percent identity by BLAST analysis: Human (100%) Mouse (85%).
Purification:	Immunoaffinity purified

Target Details

Target:	KAT2B
Alternative Name:	KAT2B / PCAF (KAT2B Products)
Background:	Name/Gene ID: KAT2B Synonyms: KAT2B, CREBBP-associated factor, GCN5, Histone acetyltransferase PCAF, K(lysine) acetyltransferase 2B, Lysine acetyltransferase 2B, Histone acetylase PCAF, PCAF, p300/CBP-associated factor, CAF, GCN5L
Gene ID:	8850
NCBI Accession:	NP_003875
UniProt:	Q92831
Pathways:	p53 Signaling , Regulation of Carbohydrate Metabolic Process

Application Details

Application Notes:	Approved: WB Usage: ELISA titer using peptide based assay: 1:312500. Western Blot: Suggested dilution at 1 µg/mL in 5 % skim milk / PBS buffer, and HRP conjugated anti-Rabbit IgG should be diluted in 1:50000 - 100000 as second antibody.
Comment:	Target Species of Antibody: Human
Restrictions:	For Research Use only

Handling

Format:	Lyophilized
Reconstitution:	Distilled Water.
Concentration:	Lot specific
Buffer:	Lyophilized from PBS with 2 % sucrose
Handling Advice:	Avoid repeat freeze-thaw cycles.
Storage:	4 °C,-20 °C
Storage Comment:	Long term: -20°C, the use of 50% glycerol is recommended if storing aliquots in -20°C for long term use (up to 1 year)

Handling

Short term (less than 1 week): 4°C. Avoid freeze-thaw cycles.

Images

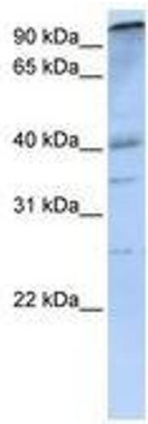


Image 1.