

Datasheet for ABIN6739065
anti-ZNF358 antibody (C-Term)



[Go to Product page](#)

1 Image

Overview

Quantity:	100 µL
Target:	ZNF358
Binding Specificity:	C-Term
Reactivity:	Human, Cow
Host:	Rabbit
Clonality:	Polyclonal
Conjugate:	This ZNF358 antibody is un-conjugated
Application:	Western Blotting (WB)

Product Details

Immunogen:	Synthetic peptide from C-Terminus of human ZNF358 (Q9NW07, NP_060553). Percent identity by BLAST analysis: Human, Gorilla, Monkey (100%), Marmoset (92%), Bovine (85%), Mouse, Bat (84%). Type of Immunogen: Synthetic peptide
Isotype:	IgG
Specificity:	Human ZNF358
Predicted Reactivity:	Percent identity by BLAST analysis: Bovine (85%).
Purification:	Immunoaffinity purified

Target Details

Target:	ZNF358
Alternative Name:	ZNF358 / ZFEND1 (ZNF358 Products)
Background:	Name/Gene ID: ZNF358 Family: Zinc Finger Synonyms: ZNF358, ZFEND, Zinc finger protein 358
Gene ID:	140467
NCBI Accession:	NP_060553
UniProt:	Q9NW07
Pathways:	Stem Cell Maintenance

Application Details

Application Notes:	Approved: WB Usage: ELISA titer using peptide based assay: 1:1562500. Western Blot: Suggested dilution at 1 µg/mL in 5 % skim milk / PBS buffer, and HRP conjugated anti-Rabbit IgG should be diluted in 1:50000 - 100000 as second antibody.
Comment:	Target Species of Antibody: Human
Restrictions:	For Research Use only

Handling

Format:	Lyophilized
Reconstitution:	Distilled Water.
Concentration:	Lot specific
Buffer:	Lyophilized from PBS with 2 % sucrose
Handling Advice:	Avoid repeat freeze-thaw cycles.
Storage:	4 °C, -20 °C
Storage Comment:	Long term: -20°C, the use of 50% glycerol is recommended if storing aliquots in -20°C for long term use (up to 1 year) Short term (less than 1 week): 4°C. Avoid freeze-thaw cycles.

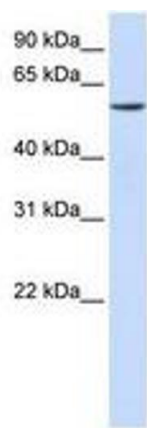


Image 1.