



[Go to Product page](#)

Datasheet for ABIN6739069
anti-JMJD8 antibody (AA 110-159)

1 Image

Overview

Quantity:	100 µL
Target:	JMJD8
Binding Specificity:	AA 110-159
Reactivity:	Human, Cow, Dog, Guinea Pig
Host:	Rabbit
Clonality:	Polyclonal
Conjugate:	This JMJD8 antibody is un-conjugated
Application:	Western Blotting (WB)

Product Details

Immunogen:	Synthetic peptide located between aa110-159 of human JMJD8 (Q96S16, NP_001005920). Percent identity by BLAST analysis: Human, Chimpanzee, Gorilla, Gibbon (100%), Monkey, Galago, Marmoset, Mouse, Rat, Hamster, Pig (92%), Dog, Bat, Horse, Opossum, Guinea pig, Turkey, Zebra finch (85%), Bovine (84%). Type of Immunogen: Synthetic peptide
Isotype:	IgG
Specificity:	Human JMJD8
Predicted Reactivity:	Percent identity by BLAST analysis: Human (100%) Mouse, Rat, Pig (92%) Dog, Guinea pig (85%) Bovine (84%).
Purification:	Immunoaffinity purified

Target Details

Target: JMJD8

Alternative Name: JMJD8 ([JMJD8 Products](#))

Background: Name/Gene ID: JMJD8

Synonyms: JMJD8, C16orf20, Jumonji domain containing 8, PP14397

Gene ID: 339123

NCBI Accession: [NP_001005920](#)

UniProt: [Q96S16](#)

Application Details

Application Notes: Approved: WB

Usage: ELISA titer using peptide based assay: 1:312500. Western Blot: Suggested dilution at 1 µg/mL in 5 % skim milk / PBS buffer, and HRP conjugated anti-Rabbit IgG should be diluted in 1:50000 - 100000 as second antibody.

Comment: Target Species of Antibody: Human

Restrictions: For Research Use only

Handling

Format: Lyophilized

Reconstitution: Distilled Water.

Concentration: Lot specific

Buffer: Lyophilized from PBS with 2 % sucrose

Handling Advice: Avoid repeat freeze-thaw cycles.

Storage: 4 °C, -20 °C

Storage Comment: Long term: -20°C, the use of 50% glycerol is recommended if storing aliquots in -20°C for long term use (up to 1 year)

Short term (less than 1 week): 4°C. Avoid freeze-thaw cycles.

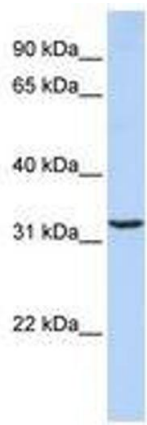


Image 1.