

Datasheet for ABIN6739071
anti-BPGM antibody (C-Term)[Go to Product page](#)

1 Image

Overview

Quantity:	100 µL
Target:	BPGM
Binding Specificity:	C-Term
Reactivity:	Human, Rat, Cow, Guinea Pig, Horse, Rabbit, Bat, Monkey
Host:	Rabbit
Clonality:	Polyclonal
Conjugate:	This BPGM antibody is un-conjugated
Application:	Western Blotting (WB)

Product Details

Immunogen:	Synthetic peptide from C-Terminus of human BPGM (P07738, NP_001715). Percent identity by BLAST analysis: Human, Chimpanzee, Gorilla, Gibbon, Monkey, Galago, Marmoset, Elephant, Panda, Bovine, Bat, Rabbit, Horse, Guinea pig, Zebra finch, Platypus (100%), Mouse, Hamster, Dog, Opossum (92%), Xenopus (90%), Turkey, Chicken (85%), Lizard, Frog (84%), Rat (78%). Type of Immunogen: Synthetic peptide
Isotype:	IgG
Specificity:	Human BPGM
Predicted Reactivity:	Percent identity by BLAST analysis: Human (100%) Mouse, Dog (92%) Chicken (85%).
Purification:	Immunoaffinity purified

Target Details

Target:	BPGM
Alternative Name:	BPGM (BPGM Products)
Background:	Name/Gene ID: BPGM Synonyms: BPGM, 2,3-diphosphoglycerate mutase, 2,3-bisphosphoglycerate mutase, Bisphosphoglycerate mutase, BPG-dependent PGAM, DPGM
Gene ID:	669
NCBI Accession:	NP_001715
UniProt:	P07738

Application Details

Application Notes:	Approved: WB Usage: ELISA titer using peptide based assay: 1:1562500. Western Blot: Suggested dilution at 1 µg/mL in 5 % skim milk / PBS buffer, and HRP conjugated anti-Rabbit IgG should be diluted in 1:50000 - 100000 as second antibody.
Comment:	Target Species of Antibody: Human
Restrictions:	For Research Use only

Handling

Format:	Lyophilized
Reconstitution:	Distilled Water.
Concentration:	Lot specific
Buffer:	Lyophilized from PBS with 2 % sucrose
Handling Advice:	Avoid repeat freeze-thaw cycles.
Storage:	4 °C,-20 °C
Storage Comment:	Long term: -20°C, the use of 50% glycerol is recommended if storing aliquots in -20°C for long term use (up to 1 year) Short term (less than 1 week): 4°C. Avoid freeze-thaw cycles.

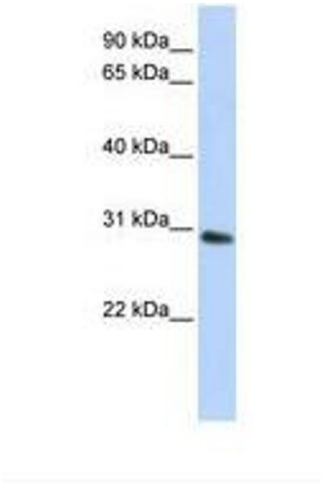


Image 1.