

Datasheet for ABIN6739080  
**anti-CDK3 antibody (C-Term)**[Go to Product page](#)

## 1 Image

## Overview

|                      |                                     |
|----------------------|-------------------------------------|
| Quantity:            | 100 µL                              |
| Target:              | CDK3                                |
| Binding Specificity: | C-Term                              |
| Reactivity:          | Human, Cow, Dog, Rabbit             |
| Host:                | Rabbit                              |
| Clonality:           | Polyclonal                          |
| Conjugate:           | This CDK3 antibody is un-conjugated |
| Application:         | Western Blotting (WB)               |

## Product Details

|                       |   |
|-----------------------|---|
| Immunogen:            | Synthetic peptide from C-Terminus of human CDK3 (Q00526, NP_001249). Percent identity by BLAST analysis: Human, Chimpanzee, Gorilla (100%), Monkey, Marmoset, Mouse (93%), Galago, Bat, Rabbit (87%), Dog (86%), Elephant, Bovine, Horse, Pig (81%), Panda, Slime mold (80%).<br><br>Type of Immunogen: Synthetic peptide |
| Isotype:              | IgG   |
| Specificity:          | Human CDK3  |
| Predicted Reactivity: | Percent identity by BLAST analysis: Human (100%) Mouse (93%) Rabbit (87%) Dog (86%) Bovine (81%).   |
| Purification:         | Immunoaffinity purified   |

## Target Details

|                   |  |
|-------------------|--|
| Target:           | CDK3   |
| Alternative Name: | CDK3 ( <a href="#">CDK3 Products</a> )   |
| Background:       | Name/Gene ID: CDK3<br>Subfamily: CDC2/CDK<br>Family: Protein Kinase<br><br>Synonyms: CDK3, Cell division protein kinase 3, Cell division kinase 3, Cyclin-dependent kinase 3 |
| Gene ID:          | 1018   |
| NCBI Accession:   | <a href="#">NP_001249</a>  |
| UniProt:          | <a href="#">Q00526</a>   |
| Pathways:         | <a href="#">Cell Division Cycle</a>  |

## Application Details

|                    |  |
|--------------------|--|
| Application Notes: | Approved: WB<br><br>Usage: ELISA titer using peptide based assay: 1:62500. Western Blot: Suggested dilution at 1 µg/mL in 5 % skim milk / PBS buffer, and HRP conjugated anti-Rabbit IgG should be diluted in 1:50000 - 100000 as second antibody. |
| Comment:           | Target Species of Antibody: Human  |
| Restrictions:      | For Research Use only  |

## Handling

|                  |  |
|------------------|--|
| Format:          | Lyophilized  |
| Reconstitution:  | Distilled Water.   |
| Concentration:   | Lot specific   |
| Buffer:          | Lyophilized from PBS, 2 % sucrose.   |
| Handling Advice: | Avoid repeat freeze-thaw cycles.   |
| Storage:         | 4 °C,-20 °C  |
| Storage Comment: | Long term: -20°C, the use of 50% glycerol is recommended if storing aliquots in -20°C for long |

Handling

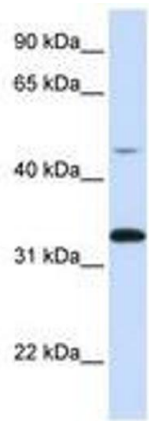
---

term use (up to 1 year)

Short term (less than 1 week): 4°C. Avoid freeze-thaw cycles.

Images

---



**Image 1.**