



Datasheet for ABIN6739094
anti-ETV6 antibody (AA 72-121)



[Go to Product page](#)

1 Image

Overview

Quantity:	100 µL
Target:	ETV6
Binding Specificity:	AA 72-121
Reactivity:	Human, Mouse, Rat, Cow, Zebrafish (Danio rerio), Rabbit, Dog, Horse, Chicken, Pig, Bat, Monkey
Host:	Rabbit
Clonality:	Polyclonal
Conjugate:	This ETV6 antibody is un-conjugated
Application:	Western Blotting (WB)

Product Details

Immunogen:	Synthetic peptide located between aa72-121 of human ETV6 (P41212, NP_001978). Percent identity by BLAST analysis: Human, Chimpanzee, Gorilla, Gibbon, Monkey, Galago, Marmoset, Mouse, Rat, Elephant, Dog, Bovine, Bat, Rabbit, Horse, Pig, Opossum, Turkey, Zebra finch, Chicken, Lizard, Stickleback, Pufferfish, Zebrafish (100%), Guinea pig, Platypus, Xenopus, Salmon (92%). Type of Immunogen: Synthetic peptide
Isotype:	IgG
Specificity:	Human ETV6
Predicted Reactivity:	Percent identity by BLAST analysis: Human, Mouse, Rat, Dog, Bovine, Rabbit, Horse, Pig, Chicken, Zebrafish (100%) Guinea pig, Xenopus (92%).

Product Details

Purification: Immunoaffinity purified

Target Details

Target: ETV6

Alternative Name: ETV6 / TEL ([ETV6 Products](#))

Background: Name/Gene ID: ETV6

Synonyms: ETV6, ETS translocation variant 6, Ets variant gene 6, ETS-related protein Tel1, TEL/ABL, TEL1 oncogene, Transcription factor ETV6, Ets variant 6, TEL, TEL1

Gene ID: 2120

NCBI Accession: [NP_001978](#)

UniProt: [P41212](#)

Application Details

Application Notes: Approved: WB (0.2 - 1 µg/mL)

Usage: ELISA titer using peptide based assay: 1:1562500. Western Blot: Suggested dilution at 1 µg/mL in 5 % skim milk / PBS buffer, and HRP conjugated anti-Rabbit IgG should be diluted in 1:50000 - 100000 as second antibody.

Comment: Target Species of Antibody: Human

Restrictions: For Research Use only

Handling

Format: Lyophilized

Reconstitution: Distilled Water.

Concentration: Lot specific

Buffer: Lyophilized from PBS, 2 % sucrose.

Handling Advice: Avoid repeat freeze-thaw cycles.

Storage: 4 °C, -20 °C

Storage Comment: Long term: -20°C, the use of 50% glycerol is recommended if storing aliquots in -20°C for long

Handling

term use (up to 1 year)

Short term (less than 1 week): 4°C. Avoid freeze-thaw cycles.

Images

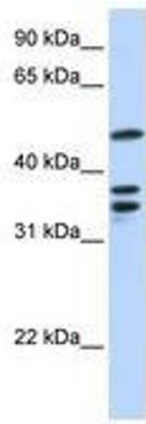


Image 1.