

Datasheet for ABIN6739106  
**anti-DHRXS antibody (C-Term)**



[Go to Product page](#)

1 Image

## Overview

Quantity:	100 µL
Target:	DHRXS
Binding Specificity:	C-Term
Reactivity:	Human, Dog
Host:	Rabbit
Clonality:	Polyclonal
Conjugate:	This DHRXS antibody is un-conjugated
Application:	Western Blotting (WB)

## Product Details

Immunogen:	Synthetic peptide from C-Terminus of human DHRXS (Q8N5I4, NP_660160). Percent identity by BLAST analysis: Human, Dog (100%), Galago, Guinea pig (92%).  Type of Immunogen: Synthetic peptide
Isotype:	IgG
Specificity:	Human DHRXS
Predicted Reactivity:	Percent identity by BLAST analysis: Dog (100%) Human, Guinea pig (92%).
Purification:	Immunoaffinity purified

## Target Details

Target:	DHRXS
---------	-------

## Target Details

---

Alternative Name:	DHR SX ( <a href="#">DHR SX Products</a> )
Background:	Name/Gene ID: DHR SX  Synonyms: DHR SX, CXorf11, DHR S5Y, DHR SX Y, DHR SY, SDR46C1, DHR S5X
Gene ID:	207063
NCBI Accession:	<a href="#">NP_660160</a>
UniProt:	<a href="#">Q8N5I4</a>

## Application Details

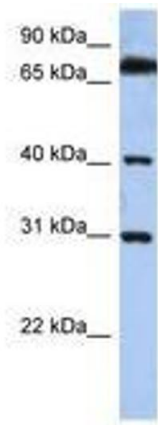
---

Application Notes:	Approved: WB  Usage: ELISA titer using peptide based assay: 1:62500. Western Blot: Suggested dilution at 1 $\mu$ g/mL in 5 % skim milk / PBS buffer, and HRP conjugated anti-Rabbit IgG should be diluted in 1:50000 - 100000 as second antibody.
Comment:	Target Species of Antibody: Human
Restrictions:	For Research Use only

## Handling

---

Format:	Lyophilized
Reconstitution:	Distilled Water.
Concentration:	Lot specific
Buffer:	Lyophilized from PBS with 2 % sucrose
Handling Advice:	Avoid repeat freeze-thaw cycles.
Storage:	4 °C, -20 °C
Storage Comment:	Long term: -20°C, the use of 50% glycerol is recommended if storing aliquots in -20°C for long term use (up to 1 year)  Short term (less than 1 week): 4°C. Avoid freeze-thaw cycles.



**Image 1.**