



[Go to Product page](#)

Datasheet for ABIN6739113  
**anti-TRIM27 antibody (AA 151-200)**

1 Image

Overview

Quantity:	100 µL
Target:	TRIM27
Binding Specificity:	AA 151-200
Reactivity:	Human, Mouse, Rat, Cow, Pig, Rabbit, Dog, Horse, Monkey
Host:	Rabbit
Clonality:	Polyclonal
Conjugate:	This TRIM27 antibody is un-conjugated
Application:	Western Blotting (WB)

Product Details

Immunogen:	Synthetic peptide located between aa151-200 of human TRIM27 (P14373). Percent identity by BLAST analysis: Human, Chimpanzee, Gorilla, Gibbon, Monkey, Galago, Marmoset, Mouse, Rat, Elephant, Panda, Dog, Bovine, Rabbit, Horse, Pig (100%), Bat, Guinea pig (92%).  Type of Immunogen: Synthetic peptide
Isotype:	IgG
Specificity:	Human TRIM27
Predicted Reactivity:	Percent identity by BLAST analysis: Human, Mouse, Rat, Dog, Bovine, Rabbit, Horse, Pig (100%) Guinea pig (92%).
Purification:	Immunoaffinity purified

## Target Details

---

Target:	TRIM27
Alternative Name:	TRIM27 ( <a href="#">TRIM27 Products</a> )
Background:	Name/Gene ID: TRIM27 Family: Tripartite Motif  Synonyms: TRIM27, Ret finger protein, Tripartite motif-containing 27, Zinc finger protein RFP, RFP transforming protein, RING finger protein 76, RNF76, Tripartite motif containing 27, RFP
Gene ID:	5987
UniProt:	<a href="#">P14373</a>

## Application Details

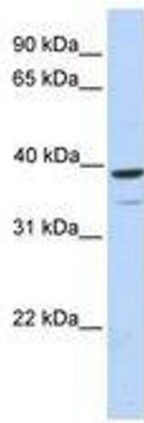
---

Application Notes:	Approved: WB  Usage: ELISA titer using peptide based assay: 1:1562500. Western Blot: Suggested dilution at 1 µg/mL in 5 % skim milk / PBS buffer, and HRP conjugated anti-Rabbit IgG should be diluted in 1:50000 - 100000 as second antibody.
Comment:	Target Species of Antibody: Human
Restrictions:	For Research Use only

## Handling

---

Format:	Lyophilized
Reconstitution:	Distilled Water.
Concentration:	Lot specific
Buffer:	Lyophilized from PBS with 2 % sucrose
Handling Advice:	Avoid repeat freeze-thaw cycles.
Storage:	4 °C,-20 °C
Storage Comment:	Long term: -20°C, the use of 50% glycerol is recommended if storing aliquots in -20°C for long term use (up to 1 year) Short term (less than 1 week): 4°C. Avoid freeze-thaw cycles.



**Image 1.**