



Datasheet for ABIN6739131
anti-ZUFSP antibody (AA 506-555)



[Go to Product page](#)

1 Image

Overview

Quantity:	100 µL
Target:	ZUFSP
Binding Specificity:	AA 506-555
Reactivity:	Human, Rat, Cow, Dog, Monkey
Host:	Rabbit
Clonality:	Polyclonal
Conjugate:	This ZUFSP antibody is un-conjugated
Application:	Western Blotting (WB)

Product Details

Immunogen:	Synthetic peptide located between aa506-555 of human ZUFSP (Q96AP4, NP_659499). Percent identity by BLAST analysis: Human, Gorilla, Gibbon, Monkey, Galago, Marmoset, Rat (100%), Mouse, Hamster, Rabbit (92%), Elephant, Panda, Dog, Bovine, Bat, Horse, Pig, Guinea pig (85%). Type of Immunogen: Synthetic peptide
Isotype:	IgG
Specificity:	Human ZUFSP
Predicted Reactivity:	Percent identity by BLAST analysis: Human, Monkey (100%) Mouse (92%) Bovine, Dog (85%) Rat (84%).
Purification:	Immunoaffinity purified

Target Details

Target:	ZUFSP
Alternative Name:	ZUFSP (ZUFSP Products)
Background:	Name/Gene ID: ZUFSP Family: Zinc Finger Synonyms: ZUFSP, C6orf113, RP3-412I7.3, DJ412I7.3
Gene ID:	221302
NCBI Accession:	NP_659499
UniProt:	Q96AP4

Application Details

Application Notes:	Approved: WB Usage: ELISA titer using peptide based assay: 1:62500. Western Blot: Suggested dilution at 1 μ g/mL in 5 % skim milk / PBS buffer, and HRP conjugated anti-Rabbit IgG should be diluted in 1:50000 - 100000 as second antibody.
Comment:	Target Species of Antibody: Human
Restrictions:	For Research Use only

Handling

Format:	Lyophilized
Reconstitution:	Distilled Water.
Concentration:	Lot specific
Buffer:	Lyophilized from PBS with 2 % sucrose
Handling Advice:	Avoid repeat freeze-thaw cycles.
Storage:	4 °C,-20 °C
Storage Comment:	Long term: -20°C, the use of 50% glycerol is recommended if storing aliquots in -20°C for long term use (up to 1 year) Short term (less than 1 week): 4°C. Avoid freeze-thaw cycles.

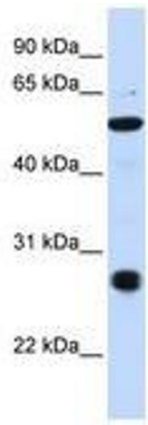


Image 1.