

Datasheet for ABIN6739147
anti-RG9MTD3 antibody (AA 50-99)[Go to Product page](#)

1 Image

Overview

Quantity:	100 µL
Target:	RG9MTD3
Binding Specificity:	AA 50-99
Reactivity:	Human, Cow, Dog, Horse, Rabbit, Pig, Bat, Monkey
Host:	Rabbit
Clonality:	Polyclonal
Conjugate:	This RG9MTD3 antibody is un-conjugated
Application:	Western Blotting (WB)

Product Details

Immunogen:	Synthetic peptide located between aa50-99 of human TRMT10B (Q6PF06, NP_659401). Percent identity by BLAST analysis: Human, Gorilla, Gibbon, Monkey, Marmoset, Elephant, Dog, Bovine, Bat, Rabbit, Horse, Pig (100%), Galago (92%), Stickleback (84%), Catfish (83%), Mouse, Rat (78%). Type of Immunogen: Synthetic peptide
Isotype:	IgG
Specificity:	Human RG9MTD3
Predicted Reactivity:	Percent identity by BLAST analysis: Human, Dog, Bovine, Rabbit, Pig (100%).
Purification:	Immunoaffinity purified

Target Details

Target:	RG9MTD3
Alternative Name:	RG9MTD3 (RG9MTD3 Products)
Background:	Name/Gene ID: TRMT10B Synonyms: TRMT10B, BA3J10.9, RG9MTD3, RP11-3J10.9
Gene ID:	158234
NCBI Accession:	NP_659401
UniProt:	Q6PF06

Application Details

Application Notes:	Approved: WB Usage: ELISA titer using peptide based assay: 1:62500. Western Blot: Suggested dilution at 0.5 µg/mL in 5 % skim milk / PBS buffer, and HRP conjugated anti-Rabbit IgG should be diluted in 1:50000 - 100000 as second antibody.
Comment:	Target Species of Antibody: Human
Restrictions:	For Research Use only

Handling

Format:	Lyophilized
Reconstitution:	Distilled Water.
Concentration:	Lot specific
Buffer:	Lyophilized from PBS with 2 % sucrose
Handling Advice:	Avoid repeat freeze-thaw cycles.
Storage:	4 °C, -20 °C
Storage Comment:	Long term: -20°C, the use of 50% glycerol is recommended if storing aliquots in -20°C for long term use (up to 1 year) Short term (less than 1 week): 4°C. Avoid freeze-thaw cycles.

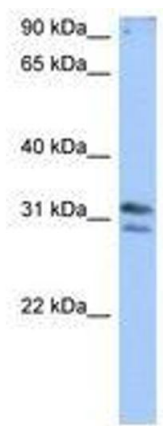


Image 1.